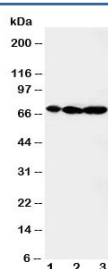


MEKK2 Antibody / MAP3K2 (R30572)

Catalog No.	Formulation	Size
R30572	0.5mg/ml if reconstituted with 0.2ml sterile DI water	100 ug

Bulk quote request

Availability	1-3 business days
Species Reactivity	Human, Mouse, Rat
Format	Antigen affinity purified
Clonality	Polyclonal (rabbit origin)
Isotype	Rabbit IgG
Purity	Antigen affinity
Buffer	Lyophilized from 1X PBS with 2.5% BSA and 0.025% sodium azide/thimerosal
UniProt	Q9Y2U5
Applications	Western Blot : 0.5-1ug/ml
Limitations	This MEKK2 antibody is available for research use only.



Western blot testing of MEKK2 antibody and Lane 1: rat brain; 2: rat testis; 3: rat lung tissue lysate

Description

MAP3K2, mitogen-activated protein kinase kinase kinase 2, also known as MEKK2, belongs to the mitogen-activated protein kinase (MAPK) kinase kinase gene family, which is involved in regulating multiple MAPK signaling pathways. Endogenous MAP3K2 localized mainly to the cytosol of unstimulated HeLa cells and rat fibroblasts. The MAP3K2 gene is mapped to chromosome 2 by the International Radiation Hybrid Mapping Consortium. MAP3K2 is a major upstream activator of the JNK, MAPK cascade. MAP3K2 was identified as 1 of 6 kinases that regulate different steps of the caveolar cycle. Silencing of MAP3K2 strongly reduced kiss-and-run dynamics, leading to an accumulation of caveolar structures at the cell surface without affecting caveolae coat assembly or clustering.

Application Notes

The stated application concentrations are suggested starting amounts. Titration of the MEKK2 antibody may be required due to differences in protocols and secondary/substrate sensitivity.

Immunogen

An amino acid sequence from the C-terminus of human MEKK2 (SADELLRHMFVHYH) was used as the immunogen for this MEKK2 antibody.

Storage

After reconstitution, the MEKK2 antibody can be stored for up to one month at 4°C. For long-term, aliquot and store at -20°C. Avoid repeated freezing and thawing.