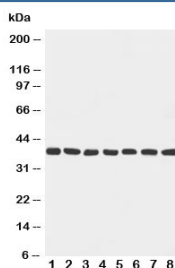


## MEK6 Antibody / MKK6 / MAP2K6 (R31021)

Catalog No.	Formulation	Size
R31021	0.5mg/ml if reconstituted with 0.2ml sterile DI water	100 ug

[Bulk quote request](#)

<b>Availability</b>	1-3 business days
<b>Species Reactivity</b>	Human, Mouse, Rat
<b>Format</b>	Antigen affinity purified
<b>Host</b>	Rabbit
<b>Clonality</b>	Polyclonal (rabbit origin)
<b>Isotype</b>	Rabbit IgG
<b>Purity</b>	Antigen affinity
<b>Buffer</b>	Lyophilized from 1X PBS with 2.5% BSA and 0.025% sodium azide/thimerosal
<b>UniProt</b>	P52564
<b>Applications</b>	Western Blot : 0.5-1ug/ml
<b>Limitations</b>	This MEK6 antibody is available for research use only.



Western blot testing with Mek6 antibody and rat samples: 1. ovary; 2. spleen; 3. brain; 4. heart; 5. mouse NIH3T3; and human samples 6. HeLa; 7. Jurkat; 8. MCF-7 cell lysate. Predicted molecular weight ~37 kDa.

### Description

MAP2K6 (Mitogen-activated protein kinase kinase 6), also known as MAP kinase kinase 6 (MAPKK6 or MKK6) and MAPK/ERK kinase 6 (MEK6) is an enzyme that in humans is encoded by the MAP2K6 gene, on chromosome 17. MKK6 is a member of the dual specificity protein kinase family, which functions as a mitogen-activated protein (MAP) kinase kinase. Han et al.(1996) described experiments addressing the function of MKK6 in intracellular signaling pathways leading toward activation of p38 MAPK. Mukherjee et al.(2006) found that the Yersinia YopJ virulence factor acted as an acetyltransferase, using coenzyme A to modify critical ser and thr residues in the MKK6 activation loop, thereby blocking phosphorylation and kinase activation. They proposed that ser and/or thr acetylation by a bacterial effector may be a

mechanism that occurs in other signaling pathways.

## Application Notes

The stated application concentrations are suggested starting amounts. Titration of the MEK6 antibody may be required due to differences in protocols and secondary/substrate sensitivity.

## Immunogen

An amino acid sequence from the N-terminus of human MKK6/MEK6 (KKRNPGLKIPKEAFEQP) was used as the immunogen for this MEK6 antibody (100% mouse homology).

## Storage

After reconstitution, the MEK6 antibody can be stored for up to one month at 4°C. For long-term, aliquot and store at -20°C. Avoid repeated freezing and thawing.