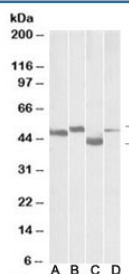


## MEIS2 Antibody (R35465)

Catalog No.	Formulation	Size
R35465-100UG	0.5 mg/ml in 1X TBS, pH7.3, with 0.5% BSA (US sourced) and 0.02% sodium azide	100 ug

### Bulk quote request

Availability	1-3 business days
Species Reactivity	Human, Mouse, Rat
Predicted Reactivity	Cow, Dog
Format	Antigen affinity purified
Clonality	Polyclonal (goat origin)
Isotype	Goat Ig
Purity	Antigen affinity
UniProt	O14770
Gene ID	4212
Applications	Western Blot : 0.1-0.3ug/ml ELISA (peptide) LOD : 1:16000
Limitations	This MEIS2 antibody is available for research use only.



Western blot testing of mouse brain (lane A), rat brain (lane B), mouse thymus (lane C) and rat thymus (lane D) lysates with MEIS2 antibody at 0.1ug/ml. Predicted molecular weight: ~52/44/42kDa (isoforms c/a/g-human and 4/3/5-mouse).

## Description

Additional name(s) for this target protein: Meis homeobox 2

## Application Notes

Optimal dilution of the MEIS2 antibody should be determined by the researcher.

1. This MEIS2 antibody detects human isoforms a, c and g and mouse isoforms 3, 4 and 5.

## **Immunogen**

Amino acids QSNRAGFLDPSVSQ were used as the immunogen for this MEIS2 antibody.

## **Storage**

Aliquot and store the MEIS2 antibody at -20oC.