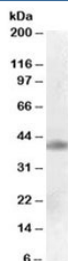


MEIS1 Antibody (R35866)

Catalog No.	Formulation	Size
R35866-100UG	0.5 mg/ml in 1X TBS, pH7.3, with 0.5% BSA (US sourced) and 0.02% sodium azide	100 ug

[Bulk quote request](#)

Availability	1-3 business days
Species Reactivity	Human
Predicted Reactivity	Cow, Mouse, Rat
Format	Antigen affinity purified
Host	Goat
Clonality	Polyclonal (goat origin)
Isotype	Goat Ig
Purity	Antigen affinity
Gene ID	4211
Applications	Western Blot : 0.1-0.3ug/ml ELISA (peptide) LOD : 1:32000
Limitations	This MEIS1 antibody is available for research use only.



Western blot testing of human cerebral cortex lysate with MEIS1 antibody at 0.1ug/ml.
Predicted molecular weight: ~43kDa.

Description

Additional name(s) for this target protein: Meis homeobox 1

Application Notes

Optimal dilution of the MEIS1 antibody should be determined by the researcher.

Immunogen

Amino acids SEDITRSANLTDQ were used as the immunogen for this MEIS1 antibody.

Storage

Aliquot and store the MEIS1 antibody at -20oC.