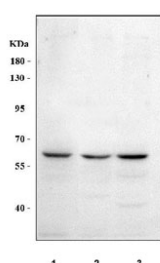


## MEGF9 Antibody / Multiple epidermal growth factor-like domains protein 9 (RQ8445)

Catalog No.	Formulation	Size
RQ8445	0.5mg/ml if reconstituted with 0.2ml sterile DI water	100 ug

[Bulk quote request](#)

Availability	1-3 business days
Species Reactivity	Human
Format	Antigen affinity purified
Host	Rabbit
Clonality	Polyclonal (rabbit origin)
Isotype	Rabbit IgG
Purity	Antigen affinity purified
Buffer	Lyophilized from 1X PBS with 2% Trehalose
UniProt	Q9H1U4
Applications	Western Blot : 0.5-1ug/ml ELISA : 0.1-0.5ug/ml
Limitations	This MEGF9 antibody is available for research use only.



Western blot testing of human 1) HeLa, 2) A549 and 3) RT4 cell lysate with MEGF9 antibody. Predicted molecular weight ~63 kDa but may be observed at higher molecular weights due to (heavy) glycosylation.

## Description

MEGF9 (Multiple EGF-like domains protein 9; also EGF-like protein 5) is a 63 kDa (predicted) novel transmembrane glycoprotein that shares some homology to beta -chains of laminin. It is expressed by hepatocytes, cerebellar Purkinje cells, Schwann cells, keratinocytes and intestinal epithelium. MEGF9 is suggested to participate in cell motility, and its absence correlates with tumor cell migration. Mature human MEGF9 is 572 amino acids (aa) in length. It is a single span type I transmembrane protein that contains a 484 aa extracellular region (aa 31-514) plus a 68 aa C-terminal cytoplasmic

domain. The extracellular region possesses a lengthy Pro-rich region (aa 55-200), followed by five EGF-like domains (aa 204-451).

## **Application Notes**

Optimal dilution of the MEGF9 antibody should be determined by the researcher.

## **Immunogen**

An E.coli-derived human recombinant protein (R216-N468) was used as the immunogen for the MEGF9 antibody.

## **Storage**

After reconstitution, the MEGF9 antibody can be stored for up to one month at 4oC. For long-term, aliquot and store at -20oC. Avoid repeated freezing and thawing.