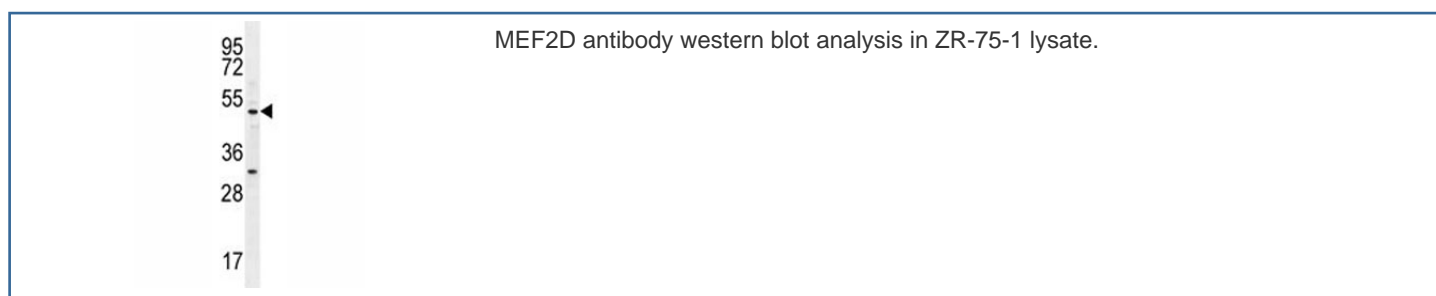


## MEF2D Antibody (F41643)

Catalog No.	Formulation	Size
F41643-0.4ML	In 1X PBS, pH 7.4, with 0.09% sodium azide	0.4 ml
F41643-0.08ML	In 1X PBS, pH 7.4, with 0.09% sodium azide	0.08 ml

[Bulk quote request](#)

<b>Availability</b>	1-3 business days
<b>Species Reactivity</b>	Human
<b>Format</b>	Antigen affinity purified
<b>Host</b>	Rabbit
<b>Clonality</b>	Polyclonal (rabbit origin)
<b>Isotype</b>	Rabbit Ig
<b>Purity</b>	Antigen affinity
<b>UniProt</b>	Q14814
<b>Applications</b>	Western Blot : 1:1000
<b>Limitations</b>	This MEF2D antibody is available for research use only.



## Description

Transcriptional activator which binds specifically to the MEF2 element, 5'-YTA[AT](4)TAR-3', found in numerous muscle-specific, growth factor-and stress-induced genes. Mediates cellular functions not only in skeletal and cardiac muscle development, but also in neuronal differentiation and survival. Plays diverse roles in the control of cell growth, survival and apoptosis via p38 MAPK signaling in muscle-specific and/or growth factor-related transcription. Plays a critical role in the regulation of neuronal apoptosis (By similarity).

## Application Notes

Titration of the MEF2D antibody may be required due to differences in protocols and secondary/substrate sensitivity.

## **Immunogen**

A portion of amino acids 108-136 from the human protein was used as the immunogen for this MEF2D antibody.

## **Storage**

Aliquot the MEF2D antibody and store frozen at -20oC or colder. Avoid repeated freeze-thaw cycles.