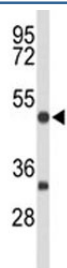


MEF2A Antibody (F51616)

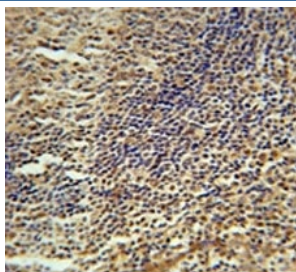
Catalog No.	Formulation	Size
F51616-0.4ML	In 1X PBS, pH 7.4, with 0.09% sodium azide	0.4 ml
F51616-0.08ML	In 1X PBS, pH 7.4, with 0.09% sodium azide	0.08 ml

[Bulk quote request](#)

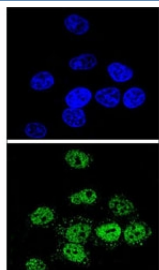
Availability	1-3 business days
Species Reactivity	Human, Mouse
Predicted Reactivity	Bovine, Pig, Rat
Format	Antigen affinity purified
Host	Rabbit
Clonality	Polyclonal (rabbit origin)
Isotype	Rabbit Ig
Purity	Antigen affinity
UniProt	Q02078
Applications	Western Blot : 1:1000 IHC (Paraffin) : 1:50-1:100 Immunofluorescence : 1:10-1:50
Limitations	This MEF2A antibody is available for research use only.



Western blot analysis of MEF2A antibody and mouse brain tissue lysate



MEF2A antibody immunohistochemistry analysis in formalin fixed and paraffin embedded human tonsil tissue.



Confocal immunofluorescent analysis of MEF2A antibody with HeLa cells followed by Alexa Fluor 488-conjugated goat anti-rabbit IgG (green). DAPI was used as a nuclear counterstain (blue).

Description

MEF2A is a DNA-binding transcription factor that activates many muscle-specific, growth factor-induced, and stress-induced genes. The encoded protein can act as a homodimer or as a heterodimer and is involved in several cellular processes, including muscle development, neuronal differentiation, cell growth control, and apoptosis. Defects in this protein could be a cause of autosomal dominant coronary artery disease 1 with myocardial infarction (ADCAD1).

Application Notes

Titration of the MEF2A antibody may be required due to differences in protocols and secondary/substrate sensitivity.

Immunogen

A portion of amino acids 453-479 from the human protein was used as the immunogen for this MEF2A antibody.

Storage

Aliquot the MEF2A antibody and store frozen at -20oC or colder. Avoid repeated freeze-thaw cycles.