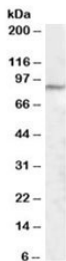


MED15 Antibody (R35102)

Catalog No.	Formulation	Size
R35102-100UG	0.5 mg/ml in 1X TBS, pH7.3, with 0.5% BSA (US sourced) and 0.02% sodium azide	100 ug

[Bulk quote request](#)

Availability	1-3 business days
Species Reactivity	Human
Predicted Reactivity	Mouse
Format	Antigen affinity purified
Host	Goat
Clonality	Polyclonal (goat origin)
Isotype	Goat Ig
Purity	Antigen affinity
Gene ID	51586
Applications	Western Blot : 1-3ug/ml ELISA (peptide) LOD : 1:8000
Limitations	This MED15 antibody is available for research use only.



Western blot testing of human lung lysate with MED15 antibody at 1ug/ml. Predicted molecular weight: ~87kDa.

Description

Additional name(s) for this target protein: Mediator complex subunit 15, PCQAP, PC2 (positive cofactor 2, multiprotein complex) glutamine/Q-rich-associated protein

Application Notes

Optimal dilution of the MED15 antibody should be determined by the researcher.

Immunogen

Amino acids PPQSQTQPLVSQAQ were used as the immunogen for this MED15 antibody.

Storage

Aliquot and store the MED15 antibody at -20oC.