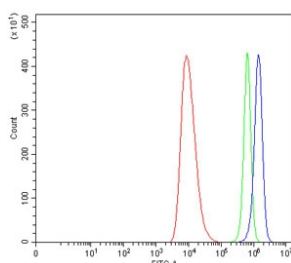


MDR15 Antibody / CXCR5 / BLR1 (RQ7162)

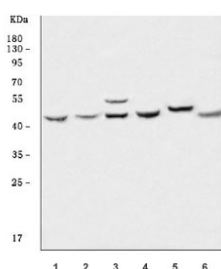
Catalog No.	Formulation	Size
RQ7162	0.5mg/ml if reconstituted with 0.2ml sterile DI water	100 ug

Bulk quote request

Availability	1-3 business days
Species Reactivity	Human, Mouse, Rat
Format	Antigen affinity purified
Host	Rabbit
Clonality	Polyclonal (rabbit origin)
Isotype	Rabbit IgG
Purity	Antigen affinity purified
Buffer	Lyophilized from 1X PBS with 2% Trehalose
UniProt	P32302
Applications	Western Blot : 0.5-1ug/ml Flow Cytometry : 1-3ug/million cells Direct ELISA : 0.1-0.5ug/ml
Limitations	This MDR15 antibody is available for research use only.



Flow cytometry testing of human HEL cells with MDR15 antibody at 1ug/million cells (blocked with goat sera); Red=cells alone, Green=isotype control, Blue= MDR15 antibody.



Western blot testing of 1) human Raji, 2) human MOLT4, 3) human HeLa, 4) rat brain, 5) mouse brain and 6) mouse lung tissue lysate with MDR15 antibody. Predicted molecular weight ~43 kDa.

Description

CXCR5 (Chemokine CXC Motif Receptor 5), also known as BLR1 (Burkitt lymphoma receptor 1) and MDR15 (Monocyte derived receptor 15), is a G protein-coupled seven transmembrane receptor for chemokine CXCL13(also known as BLC) and belongs to the CXC chemokine receptor family. In humans, the CXC-R5 protein is encoded by the CXCR5 gene. The gene plays an essential role in B cell migration. Reif et al.(2002) concluded that their findings defined the mechanism of B-cell relocalization in response to antigen, and established that cell position in vivo can be determined by the balance of responsiveness to chemoattractants made in separate but adjacent zones. Chan et al.(2003) investigated the expression of chemokines and chemokine receptors in eyes with primary intraocular B-cell lymphoma(PIOL).

Application Notes

Optimal dilution of the MDR15 antibody should be determined by the researcher.

Immunogen

Recombinant human protein (amino acids A181-S358) was used as the immunogen for the MDR15 antibody.

Storage

After reconstitution, the MDR15 antibody can be stored for up to one month at 4oC. For long-term, aliquot and store at -20oC. Avoid repeated freezing and thawing.