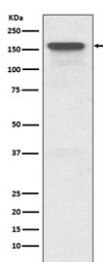


## MDR1 Antibody / P Glycoprotein / ABCB1 [clone FDB-1] (RQ5205)

Catalog No.	Formulation	Size
RQ5205	Antibody in PBS with 0.02% sodium azide, 50% glycerol and 0.4-0.5mg/ml BSA	100 ul

[Bulk quote request](#)

Availability	1-2 weeks
Species Reactivity	Human
Format	Purified
Clonality	Rabbit Monoclonal
Isotype	Rabbit IgG
Clone Name	FDB-1
Purity	Affinity purified
UniProt	P08183
Applications	Western Blot : 1:500-1:2000
Limitations	This MDR1 antibody is available for research use only.



Western blot testing of human HeLa cell lysate with MDR1 antibody. Expected molecular weight: 141-180 kDa depending on glycosylation level.

### Description

The membrane-associated protein encoded by this gene is a member of the superfamily of ATP-binding cassette (ABC) transporters. ABC proteins transport various molecules across extra- and intra-cellular membranes. ABC genes are divided into seven distinct subfamilies (ABC1, MDR/TAP, MRP, ALD, OABP, GCN20, White). This protein is a member of the MDR/TAP subfamily. Members of the MDR/TAP subfamily are involved in multidrug resistance. The protein encoded by this gene is an ATP-dependent drug efflux pump for xenobiotic compounds with broad substrate specificity. It is responsible for decreased drug accumulation in multidrug-resistant cells and often mediates the development of resistance to anticancer drugs. This protein also functions as a transporter in the blood-brain barrier. [RefSeq]

## Application Notes

Optimal dilution of the MDR1 antibody should be determined by the researcher.

## Immunogen

A synthetic peptide specific to human P Glycoprotein / ABCB1 / MDR1 was used as the immunogen for the MDR1 antibody.

## Storage

Store the MDR1 antibody at -20oC.