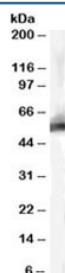


MDM2 Antibody (R33423)

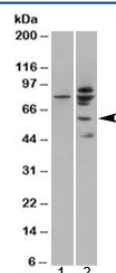
Catalog No.	Formulation	Size
R33423-100UG	0.5 mg/ml in 1X TBS, pH7.3, with 0.5% BSA (US sourced) and 0.02% sodium azide	100 ug

[Bulk quote request](#)

Availability	1-3 business days
Species Reactivity	Human
Predicted Reactivity	Rat, Dog, Pig, Cat, Cow
Format	Antigen affinity purified
Clonality	Polyclonal (goat origin)
Isotype	Goat Ig
Purity	Antigen affinity
Gene ID	4193
Applications	Western Blot : 0.3-1ug/ml ELISA (peptide) LOD : 1:64000
Limitations	This MDM2 antibody is available for research use only.



Western blot testing of human liver lysate with MDM2 antibody at 0.3ug/ml. Predicted molecular weight: ~55 kDa but can be observed at up to ~90 kDa.



Western blot of HEK293 lysate overexpressing MDM2 probed with MDM2 antibody (mock transfection in lane 1). Predicted molecular weight ~56kDa.

Description

Additional name(s) for this target protein: Mouse double minute 2

Application Notes

Optimal dilution of the MDM2 antibody should be determined by the researcher.

Immunogen

Amino acids DELSGERQKRHKSD were used as the immunogen for this MDM2 antibody.

Storage

Aliquot and store the MDM2 antibody at -20oC.