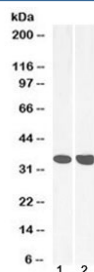


MDH2 Antibody (R36468)

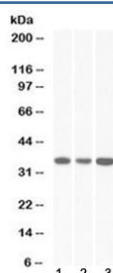
Catalog No.	Formulation	Size
R36468-100UG	0.5 mg/ml in 1X TBS, pH7.3, with 0.5% BSA (US sourced) and 0.02% sodium azide	100 ug

[Bulk quote request](#)

Availability	1-3 business days
Species Reactivity	Human
Format	Antigen affinity purified
Host	Goat
Clonality	Polyclonal (goat origin)
Isotype	Goat Ig
Purity	Antigen affinity
UniProt	P40926
Gene ID	4191
Applications	Western Blot : 0.01-0.1ug/ml ELISA (peptide) LOD : 1:16000
Limitations	This MDH2 antibody is available for research use only.



Western blot testing of human 1) heart and 2) liver lysate with MDH2 antibody at 0.03ug/ml. Predicted molecular weight ~35 kDa.



Western blot testing of human 1) HeLa, 2) HepG2 and 3) K562 lysate with MDH2 antibody at 0.03ug/ml. Predicted molecular weight ~35 kDa.

Description

Additional name(s) for this target protein: Malate dehydrogenase 2

Application Notes

Optimal dilution of the MDH2 antibody should be determined by the researcher.

Immunogen

Amino acids DQLTALTGRIQE (221-232) were used as the immunogen for this MDH2 antibody.

Storage

Aliquot and store the MDH2 antibody at -20oC.