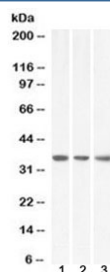


MDH2 Antibody (R36467)

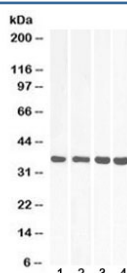
Catalog No.	Formulation	Size
R36467-100UG	0.5 mg/ml in 1X TBS, pH7.3, with 0.5% BSA (US sourced) and 0.02% sodium azide	100 ug

[Bulk quote request](#)

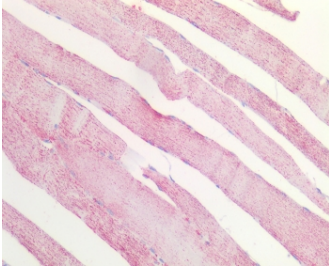
Availability	1-3 business days
Species Reactivity	Human, Mouse, Rat, Pig
Format	Antigen affinity purified
Clonality	Polyclonal (goat origin)
Isotype	Goat Ig
Purity	Antigen affinity
UniProt	P40926
Gene ID	4191
Applications	Western Blot : 0.01-0.1ug/ml Immunohistochemistry (FFPE) : 5ug/ml ELISA (peptide) LOD : 1:8000
Limitations	This MDH2 antibody is available for research use only.



Western blot testing of 1) human HeLa, 2) human HepG2 and 3) mouse NIH3T3 lysate with MDH2 antibody at 0.1ug/ml. Predicted molecular weight ~35 kDa.



Western blot testing of heart lysate from 1) human, 2) mouse, 3) rat and 4) pig with MDH2 antibody at 0.01ug/ml. Predicted molecular weight ~35 kDa.



IHC staining of FFPE human skeletal muscle tissue with MDH2 antibody at 5ug/ml.
Required HIER: steamed antigen retrieval with pH6 citrate buffer; AP-staining.

Description

Additional name(s) for this target protein: Malate dehydrogenase 2

Application Notes

Optimal dilution of the MDH2 antibody should be determined by the researcher.

Immunogen

Amino acids TRDDL FNTNAT were used as the immunogen for this MDH2 antibody.

Storage

Aliquot and store the MDH2 antibody at -20oC.