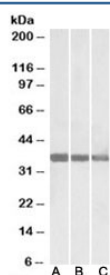


MDH1 Antibody (R36224)

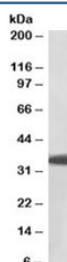
Catalog No.	Formulation	Size
R36224-100UG	0.5 mg/ml in 1X TBS, pH7.3, with 0.5% BSA (US sourced) and 0.02% sodium azide	100 ug

[Bulk quote request](#)

Availability	1-3 business days
Species Reactivity	Human, Mouse, Rat, Pig
Predicted Reactivity	Dog
Format	Antigen affinity purified
Clonality	Polyclonal (goat origin)
Isotype	Goat Ig
Purity	Antigen affinity
Gene ID	4190
Applications	Western Blot : 0.01-0.03ug/ml ELISA (peptide) LOD : 1:128000
Limitations	This MDH1 antibody is available for research use only.



Western blot testing of human [A], mouse [B] and rat [C] heart lysate with MDH1 antibody at 0.01ug/ml. Predicted molecular weight: ~36kDa.



Western blot of pig heart lysate with MDH1 antibody at 0.01ug/ml. Predicted molecular weight: ~36kDa.

Description

Additional name(s) for this target protein: Malate dehydrogenase 1; MOR2

Application Notes

Optimal dilution of the MDH1 antibody should be determined by the researcher.

Immunogen

Amino acids TNCLTASKSAPSIPK were used as the immunogen for this MDH1 antibody.

Storage

Aliquot and store the MDH1 antibody at -20oC.