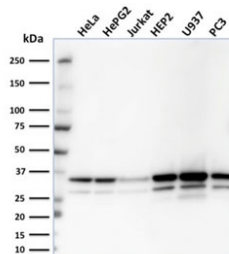


## MDH1 Antibody / Malate dehydrogenase 1 [clone CPTC-MDH1-1] (V7949)

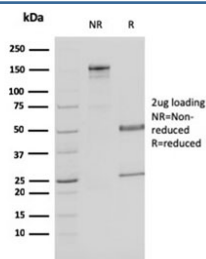
Catalog No.	Formulation	Size
V7949-100UG	0.2 mg/ml in 1X PBS with 0.1 mg/ml BSA (US sourced) and 0.05% sodium azide	100 ug
V7949-20UG	0.2 mg/ml in 1X PBS with 0.1 mg/ml BSA (US sourced) and 0.05% sodium azide	20 ug
V7949SAF-100UG	1 mg/ml in 1X PBS; BSA free, sodium azide free	100 ug

[Bulk quote request](#)

<b>Availability</b>	1-3 business days
<b>Species Reactivity</b>	Human
<b>Format</b>	Purified
<b>Clonality</b>	Monoclonal (mouse origin)
<b>Isotype</b>	Mouse IgG2a, kappa
<b>Clone Name</b>	CPTC-MDH1-1
<b>Purity</b>	Protein G affinity chromatography
<b>UniProt</b>	P40925
<b>Applications</b>	Western Blot : 1-2ug/ml
<b>Limitations</b>	This MDH1 antibody is available for research use only.



Western blot testing of human samples with MDH1 antibody. Predicted molecular weight: ~36 kDa.



SDS-PAGE analysis of purified, BSA-free MDH1 antibody as confirmation of integrity and purity.

## Description

Malate dehydrogenase catalyzes the reversible oxidation of malate to oxaloacetate, utilizing the NAD/NADH cofactor system in the citric acid cycle. The protein encoded by this gene is localized to the cytoplasm and may play pivotal roles in the malate-aspartate shuttle that operates in the metabolic coordination between cytosol and mitochondria. Alternatively spliced transcript variants encoding distinct isoforms have been found for this gene.

## Application Notes

Optimal dilution of the MDH1 antibody should be determined by the researcher.

## Immunogen

A recombinant human full-length MDH1 protein was used as the immunogen for this MDH1 antibody.

## Storage

Store the MDH1 antibody at 2-8°C (with azide) or aliquot and store at -20°C or colder (without azide).