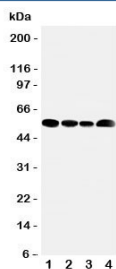


MCT5 Antibody / SLC16A4 (R31311)

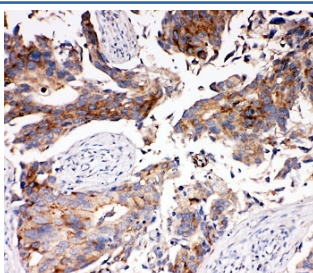
Catalog No.	Formulation	Size
R31311	0.5mg/ml if reconstituted with 0.2ml sterile DI water	100 ug

[Bulk quote request](#)

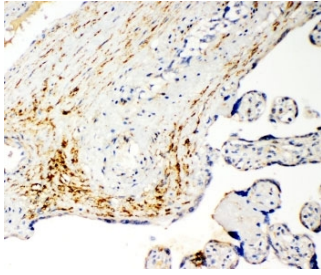
Availability	1-3 business days
Species Reactivity	Human, Mouse, Rat
Format	Antigen affinity purified
Host	Rabbit
Clonality	Polyclonal (rabbit origin)
Isotype	Rabbit IgG
Purity	Antigen affinity
Buffer	Lyophilized from 1X PBS with 2.5% BSA and 0.025% sodium azide/thimerosal
UniProt	O15374
Applications	Western Blot : 0.5-1ug/ml IHC (FFPE) : 0.5-1ug/ml
Limitations	This MCT5 antibody is available for research use only.



Western blot testing of MCT5 antibody and lysate from 1: rat testis; 2: human Jurkat; 3: (h) HeLa; 4: (h) MCF-7 cells. Predicted molecular weight: ~54 kDa.



IHC-P: MCT5 antibody testing of human breast cancer tissue



IHC-P: MCT5 antibody testing of human placenta cancer tissue

Description

Monocarboxylate transporter 5, also called Solute carrier family 16 member 4 or MCT5, is a protein that in humans is encoded by the SLC16A4 gene. This gene is mapped to 1p13.3. It acts as the proton-linked monocarboxylate transporter. This gene catalyzes the rapid transport across the plasma membrane of many monocarboxylates such as lactate, pyruvate, branched-chain oxo acids derived from leucine, valine and isoleucine, and the ketone bodies acetoacetate, beta-hydroxybutyrate and acetate.

Application Notes

The stated application concentrations are suggested starting amounts. Titration of the MCT5 antibody may be required due to differences in protocols and secondary/substrate sensitivity.

Immunogen

An amino acid sequence from the N-terminus of human Monocarboxylate transporter 5 (VVTTKYFKKRLALST) was used as the immunogen for this MCT5 antibody.

Storage

After reconstitution, the MCT5 antibody can be stored for up to one month at 4°C. For long-term, aliquot and store at -20°C. Avoid repeated freezing and thawing.