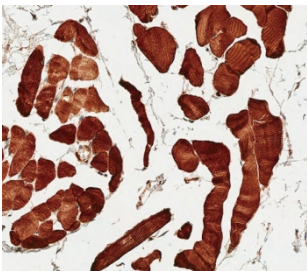


MCT4 Antibody / SLC16A3 (F54278)

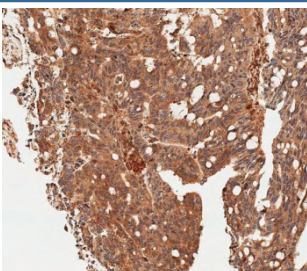
Catalog No.	Formulation	Size
F54278-0.4ML	In 1X PBS, pH 7.4, with 0.09% sodium azide	0.4 ml
F54278-0.08ML	In 1X PBS, pH 7.4, with 0.09% sodium azide	0.08 ml

[Bulk quote request](#)

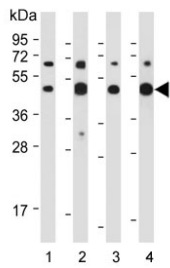
Availability	1-3 business days
Species Reactivity	Human, Mouse, Rat
Format	Purified
Host	Rabbit
Clonality	Polyclonal (rabbit origin)
Isotype	Rabbit Ig
Purity	Antigen affinity purified
UniProt	O15427
Applications	Western Blot : 1:500-1:2000 Immunohistochemistry (FFPE) : 1:25
Limitations	This MCT4 antibody is available for research use only.



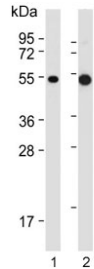
IHC testing of FFPE human skeletal muscle tissue with MCT4 antibody. HIER: steam section in pH6 citrate buffer for 20 min and allow to cool prior to staining.



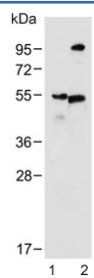
IHC testing of FFPE human colon carcinoma tissue with MCT4 antibody. HIER: steam section in pH6 citrate buffer for 20 min and allow to cool prior to staining.



Western blot testing of human 1) NCI-H460, 2) HeLa, 3) HCT-116 and 4) mouse Neuro-2a cell lysate with MCT4 antibody. Predicted molecular weight ~50 kDa.



Western blot testing of 1) human skeletal muscle and 2) mouse C2C12 lysate with MCT4 antibody. Predicted molecular weight ~50 kDa.



Western blot testing of 1) human skeletal muscle and 2) rat skeletal muscle lysate with MCT4 antibody. Predicted molecular weight ~50 kDa.

Description

Lactic acid and pyruvate transport across plasma membranes is catalyzed by members of the proton-linked monocarboxylate transporter (MCT) family, which has been designated solute carrier family-16. Each MCT appears to have slightly different substrate and inhibitor specificities and transport kinetics, which are related to the metabolic requirements of the tissues in which it is found.

Application Notes

The stated application concentrations are suggested starting points. Titration of the MCT4 antibody may be required due to differences in protocols and secondary/substrate sensitivity.

Immunogen

A portion of amino acids 433-462 from the human protein were used as the immunogen for the MCT4 antibody.

Storage

Aliquot the MCT4 antibody and store frozen at -20°C or colder. Avoid repeated freeze-thaw cycles.

