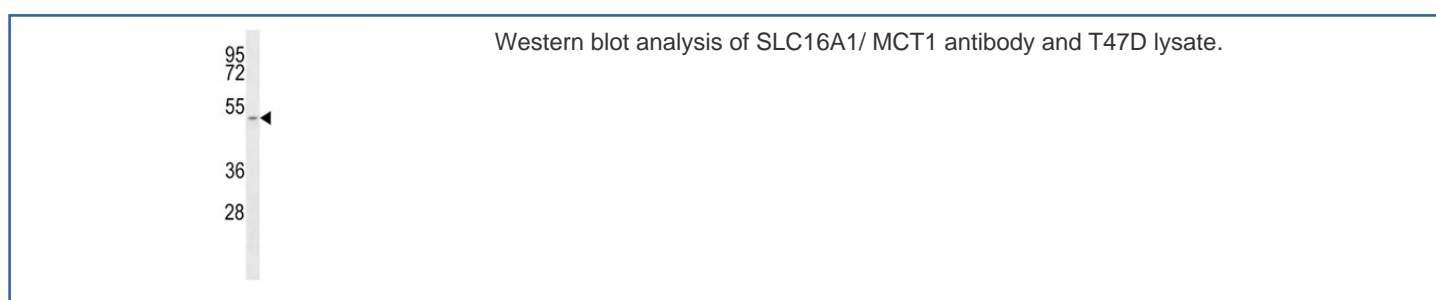


MCT1 Antibody (F48178)

Catalog No.	Formulation	Size
F48178-0.4ML	In 1X PBS, pH 7.4, with 0.09% sodium azide	0.4 ml
F48178-0.08ML	In 1X PBS, pH 7.4, with 0.09% sodium azide	0.08 ml

[Bulk quote request](#)

Availability	1-3 business days
Species Reactivity	Human
Format	Purified
Clonality	Polyclonal (rabbit origin)
Isotype	Rabbit Ig
Purity	Purified
UniProt	P53985
Applications	Western Blot : 1:1000
Limitations	This MCT1 antibody is available for research use only.



Description

SLC16A1 is a monocarboxylate transporter (MCT1) that mediates the movement of lactate and pyruvate across cell membranes import and export of these substrates by tissues such as erythrocytes, muscle, intestine, and kidney are ascribed largely to the action of a proton-coupled MCT.

Application Notes

Titration of the MCT1 antibody may be required due to differences in protocols and secondary/substrate sensitivity.

Immunogen

A portion of amino acids 430-460 from the human protein was used as the immunogen for this MCT1 antibody.

Storage

Aliquot the MCT1 antibody and store frozen at -20oC or colder. Avoid repeated freeze-thaw cycles.