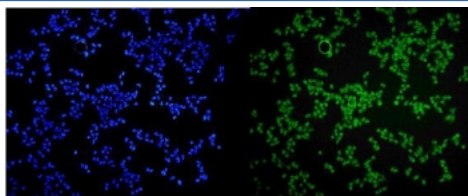


## MCPIP1 Antibody / ZC3H12A (RQ5787)

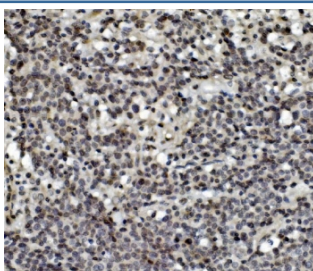
Catalog No.	Formulation	Size
RQ5787	0.5mg/ml if reconstituted with 0.2ml sterile DI water	100 ug

[Bulk quote request](#)

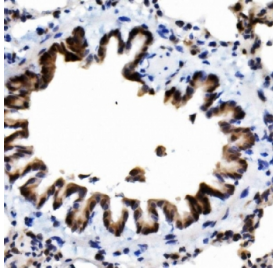
<b>Availability</b>	1-3 business days
<b>Species Reactivity</b>	Human, Mouse, Rat
<b>Format</b>	Antigen affinity purified
<b>Host</b>	Rabbit
<b>Clonality</b>	Polyclonal (rabbit origin)
<b>Isotype</b>	Rabbit IgG
<b>Purity</b>	Affinity purified
<b>Buffer</b>	Lyophilized from 1X PBS with 2% Trehalose and 0.025% sodium azide
<b>UniProt</b>	Q5D1E8
<b>Applications</b>	Western Blot : 0.5-1ug/ml Immunohistochemistry : 1-2ug/ml Immunofluorescence : 2-4ug/ml Flow Cytometry : 1-3ug/million cells Direct ELISA : 0.1-0.5ug/ml
<b>Limitations</b>	This MCPIP1 antibody is available for research use only.



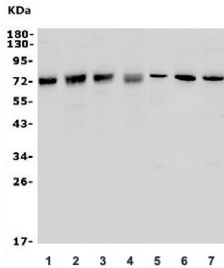
Immunofluorescent staining of FFPE human HeLa cells with MCPIP1 antibody (green) and DAPI nuclear stain (blue). HIER: steam section in pH6 citrate buffer for 20 min.



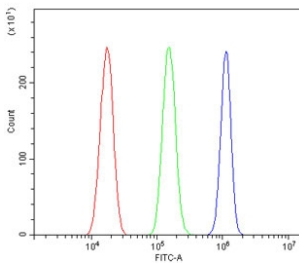
IHC staining of FFPE human lung cancer with MCPIP1 antibody. HIER: boil tissue sections in pH8 EDTA for 20 min and allow to cool before testing.



IHC staining of FFPE rat lung with MCPIP1 antibody. HIER: boil tissue sections in pH8 EDTA for 20 min and allow to cool before testing.



Western blot testing of human 1) K562, 2) Raji, 3) SW620, 4) HeLa, 5) rat spleen, 6) rat kidney, 7) mouse thymus lysate with MCPIP1 antibody. Predicted molecular weight ~66 kDa.



Flow cytometry testing of human U-87 MG cells with MCPIP1 antibody at 1ug/million cells (blocked with goat sera); Red=cells alone, Green=isotype control, Blue= MCPIP1 antibody.

## Description

Zinc finger CCCH-type containing 12A is a protein in humans that is encoded by the ZC3H12A gene. ZC3H12A is an MCP1 (CCL2; MIM 158105)-induced protein that acts as a transcriptional activator and causes cell death of cardiomyocytes, possibly via induction of genes associated with apoptosis.

## Application Notes

Optimal dilution of the MCPIP1 antibody should be determined by the researcher.

## Immunogen

Recombinant human protein (amino acids Q36-T98) was used as the immunogen for the MCPIP1 antibody.

## Storage

After reconstitution, the MCPIP1 antibody can be stored for up to one month at 4°C. For long-term, aliquot and store at -20°C. Avoid repeated freezing and thawing.

