

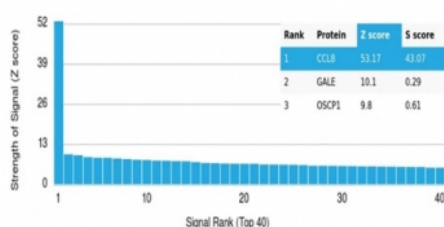
MCP2 Antibody / CCL8 [clone CCL8/3311] (V9514)

Catalog No.	Formulation	Size
V9514-100UG	0.2 mg/ml in 1X PBS with 0.1 mg/ml BSA (US sourced), 0.05% sodium azide	100 ug
V9514-20UG	0.2 mg/ml in 1X PBS with 0.1 mg/ml BSA (US sourced), 0.05% sodium azide	20 ug
V9514SAF-100UG	1 mg/ml in 1X PBS; BSA free, sodium azide free	100 ug

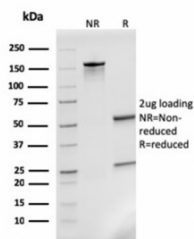
[Bulk quote request](#)

Availability	1-3 business days
Species Reactivity	Human
Format	Purified
Clonality	Monoclonal (mouse origin)
Isotype	Mouse IgG1, kappa
Clone Name	CCL8/3311
Purity	Protein A/G affinity
UniProt	P80075
Localization	Secreted
Applications	Immunohistochemistry (FFPE) : 1-2ug/ml Western Blot : 2-4ug/ml
Limitations	This MCP2 antibody is available for research use only.

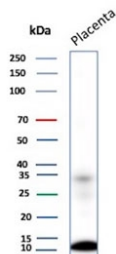
Human Protein Microarray Specificity Validation



Analysis of HuProt(TM) microarray containing more than 19,000 full-length human proteins using MCP2 antibody (clone CCL8/3311). These results demonstrate the foremost specificity of the CCL8/3311 mAb. Z- and S- score: The Z-score represents the strength of a signal that an antibody (in combination with a fluorescently-tagged anti-IgG secondary Ab) produces when binding to a particular protein on the HuProt(TM) array. Z-scores are described in units of standard deviations (SD's) above the mean value of all signals generated on that array. If the targets on the HuProt(TM) are arranged in descending order of the Z-score, the S-score is the difference (also in units of SD's) between the Z-scores. The S-score therefore represents the relative target specificity of an Ab to its intended target.



SDS-PAGE analysis of purified, BSA-free MCP2 antibody (clone CCL8/3311) as confirmation of integrity and purity.



Western blot testing of human placental tissue lysate with MCP2 antibody. Predicted molecular weight ~11 kDa, higher molecular weight bands may represent dimerization.

Description

This antimicrobial gene is one of several chemokine genes clustered on the q-arm of chromosome 17. Chemokines form a superfamily of secreted proteins involved in immunoregulatory and inflammatory processes. The superfamily is divided into four subfamilies based on the arrangement of N-terminal cysteine residues of the mature peptide. This chemokine is a member of the CC subfamily which is characterized by two adjacent cysteine residues. This cytokine displays chemotactic activity for monocytes, lymphocytes, basophils and eosinophils. By recruiting leukocytes to sites of inflammation this cytokine may contribute to tumor-associated leukocyte infiltration and to the antiviral state against HIV infection.

Application Notes

Optimal dilution of the MCP2 antibody should be determined by the researcher.

Immunogen

A portion of amino acids 1-100 from the human protein was used as the immunogen for the MCP2 antibody.

Storage

Aliquot the MCP2 antibody and store frozen at -20°C or colder. Avoid repeated freeze-thaw cycles.