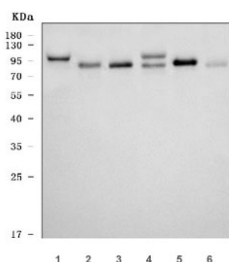


## MCM8 Antibody (RQ7185)

Catalog No.	Formulation	Size
RQ7185	0.5mg/ml if reconstituted with 0.2ml sterile DI water	100 ug

**Bulk quote request**

<b>Availability</b>	1-3 business days
<b>Species Reactivity</b>	Human, Mouse, Rat
<b>Format</b>	Antigen affinity purified
<b>Clonality</b>	Polyclonal (rabbit origin)
<b>Isotype</b>	Rabbit IgG
<b>Purity</b>	Antigen affinity purified
<b>Buffer</b>	Lyophilized from 1X PBS with 2% Trehalose
<b>UniProt</b>	Q9UJA3
<b>Applications</b>	Western Blot : 0.5-1ug/ml Direct ELISA : 0.1-0.5ug/ml
<b>Limitations</b>	This MCM8 antibody is available for research use only.



Western blot testing of 1) human 293T, 2) human HeLa, 3) human placenta, 4) rat testis, 5) rat H9c2(2-1) cells and 6) mouse testis tissue lysate with MCM8 antibody. Expected molecular weight ~94/89 kDa (isoforms 1/2).

## Description

DNA replication licensing factor MCM8 is a protein that in humans is encoded by the MCM8 gene. The protein encoded by this gene is one of the highly conserved mini-chromosome maintenance proteins (MCM) that are essential for the initiation of eukaryotic genome replication. The hexameric protein complex formed by the MCM proteins is a key component of the pre-replication complex (pre\_RC) and may be involved in the formation of replication forks and in the recruitment of other DNA replication related proteins. This protein contains the central domain that is conserved among the MCM proteins. And this protein has been shown to co-immunoprecipitate with MCM4, 6 and 7, which suggests that it may interact with other MCM proteins and play a role in DNA replication. Alternatively spliced transcript variants encoding

distinct isoforms have been described.

## Application Notes

Optimal dilution of the MCM8 antibody should be determined by the researcher.

## Immunogen

Recombinant human protein (amino acids N598-M840) was used as the immunogen for the MCM8 antibody.

## Storage

After reconstitution, the MCM8 antibody can be stored for up to one month at 4oC. For long-term, aliquot and store at -20oC. Avoid repeated freezing and thawing.