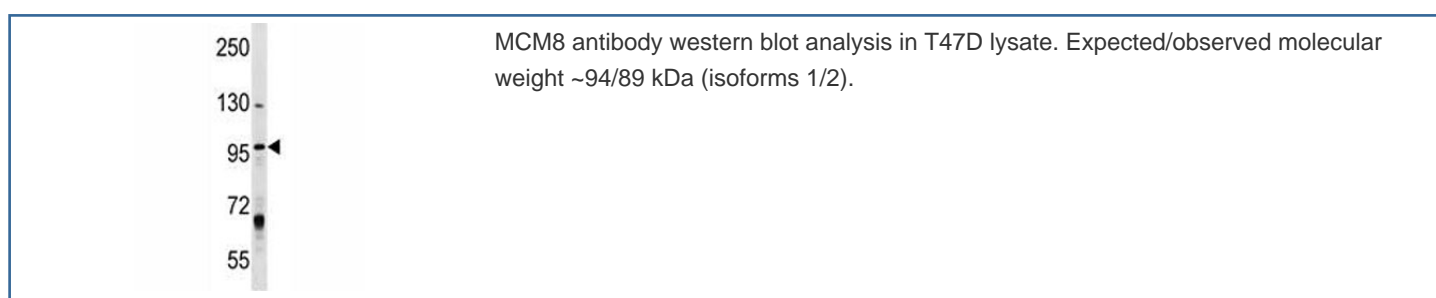


MCM8 Antibody (F45609)

Catalog No.	Formulation	Size
F45609-0.4ML	In 1X PBS, pH 7.4, with 0.09% sodium azide	0.4 ml
F45609-0.08ML	In 1X PBS, pH 7.4, with 0.09% sodium azide	0.08 ml

[Bulk quote request](#)

Availability	1-3 business days
Species Reactivity	Human
Format	Antigen affinity purified
Clonality	Polyclonal (rabbit origin)
Isotype	Rabbit Ig
Purity	Antigen affinity
UniProt	Q9UJA3
Applications	Western Blot : 1:1000
Limitations	This MCM8 antibody is available for research use only.



Description

The protein encoded by this gene is one of the highly conserved mini-chromosome maintenance proteins (MCM) that are essential for the initiation of eukaryotic genome replication. The hexameric protein complex formed by the MCM proteins is a key component of the pre-replication complex (pre_RC) and may be involved in the formation of replication forks and in the recruitment of other DNA replication related proteins. This protein contains the central domain that is conserved among the MCM proteins. This protein has been shown to co-immunoprecipitate with MCM4, 6 and 7, which suggests that it may interact with other MCM proteins and play a role in DNA replication. Alternatively spliced transcript variants encoding distinct isoforms have been described.

Application Notes

Titration of the MCM8 antibody may be required due to differences in protocols and secondary/substrate sensitivity.

Immunogen

A portion of amino acids 322-350 from the human protein was used as the immunogen for this MCM8 antibody.

Storage

Aliquot the MCM8 antibody and store frozen at -20oC or colder. Avoid repeated freeze-thaw cycles.