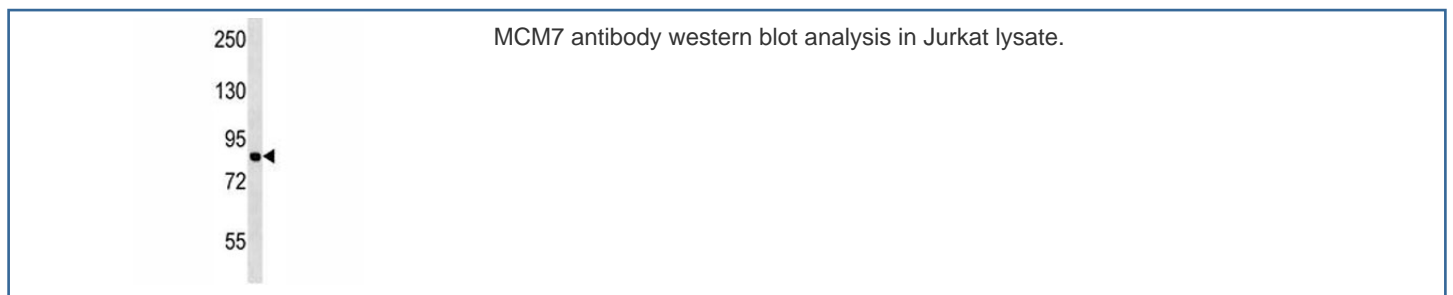


MCM7 Antibody (F44682)

Catalog No.	Formulation	Size
F44682-0.4ML	In 1X PBS, pH 7.4, with 0.09% sodium azide	0.4 ml
F44682-0.08ML	In 1X PBS, pH 7.4, with 0.09% sodium azide	0.08 ml

[Bulk quote request](#)

Availability	1-3 business days
Species Reactivity	Human
Format	Antigen affinity purified
Host	Rabbit
Clonality	Polyclonal (rabbit origin)
Isotype	Rabbit Ig
Purity	Antigen affinity
UniProt	P33993
Applications	Western Blot : 1:1000
Limitations	This MCM7 antibody is available for research use only.



Description

The protein encoded by this gene is one of the highly conserved mini-chromosome maintenance proteins (MCM) that are essential for the initiation of eukaryotic genome replication. The hexameric protein complex formed by the MCM proteins is a key component of the pre-replication complex (pre_RC) and may be involved in the formation of replication forks and in the recruitment of other DNA replication related proteins. The MCM complex consisting of this protein and MCM2, 4 and 6 proteins possesses DNA helicase activity, and may act as a DNA unwinding enzyme. Cyclin D1-dependent kinase, CDK4, is found to associate with this protein, and may regulate the binding of this protein with the tumor suppressor protein RB1/RB. Alternatively spliced transcript variants encoding distinct isoforms have been reported.

This antibody is part of a broader panel of [MCM7 antibodies](#) designed to support detection of proliferation-associated proteins across multiple research applications.

Application Notes

Titration of the MCM7 antibody may be required due to differences in protocols and secondary/substrate sensitivity.

Immunogen

A portion of amino acids 290-318 from the human protein was used as the immunogen for this MCM7 antibody.

Storage

Aliquot the MCM7 antibody and store frozen at -20oC or colder. Avoid repeated freeze-thaw cycles.