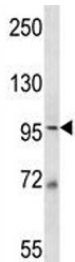


MCM6 Antibody (F44121)

Catalog No.	Formulation	Size
F44121-0.4ML	In 1X PBS, pH 7.4, with 0.09% sodium azide	0.4 ml
F44121-0.08ML	In 1X PBS, pH 7.4, with 0.09% sodium azide	0.08 ml

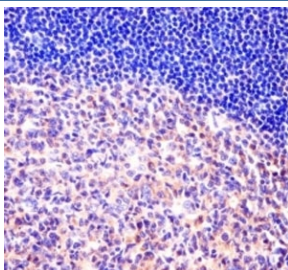
[Bulk quote request](#)

Availability	1-3 business days
Species Reactivity	Human
Predicted Reactivity	Bovine
Format	Antigen affinity purified
Host	Rabbit
Clonality	Polyclonal (rabbit origin)
Isotype	Rabbit Ig
Purity	Antigen affinity
UniProt	Q14566
Applications	Western Blot : 1:1000 IHC (Paraffin) : 1:10-1:50
Limitations	This MCM6 antibody is available for research use only.



250
130
95
72
55

MCM6 antibody western blot analysis in 293 lysate. Expected molecular weight: 92-105 kDa.



MCM6 antibody immunohistochemistry analysis in formalin fixed and paraffin embedded human tonsil tissue.

Description

MCM6 one of the highly conserved mini-chromosome maintenance proteins (MCM) that are essential for the initiation of eukaryotic genome replication.

Application Notes

Titration of the MCM6 antibody may be required due to differences in protocols and secondary/substrate sensitivity.

Immunogen

A portion of amino acids 80-109 from the human protein was used as the immunogen for this MCM6 antibody.

Storage

Aliquot the MCM6 antibody and store frozen at -20oC or colder. Avoid repeated freeze-thaw cycles.