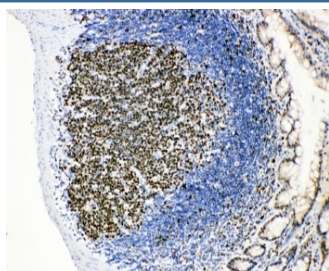


MCM2 Antibody (R30800)

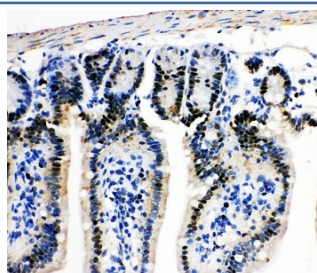
Catalog No.	Formulation	Size
R30800	0.5mg/ml if reconstituted with 0.2ml sterile DI water	100 ug

Bulk quote request

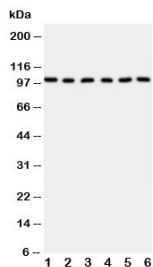
Availability	1-3 business days
Species Reactivity	Mouse, Rat
Format	Antigen affinity purified
Clonality	Polyclonal (rabbit origin)
Isotype	Rabbit IgG
Purity	Antigen affinity
Buffer	Lyophilized from 1X PBS with 2.5% BSA and 0.025% sodium azide/thimerosal
UniProt	P97310
Applications	Western Blot : 0.5-1ug/ml IHC (FFPE) : 0.5-1ug/ml Immunocytochemistry : 0.5-1ug/ml
Limitations	This MCM2 antibody is available for research use only.



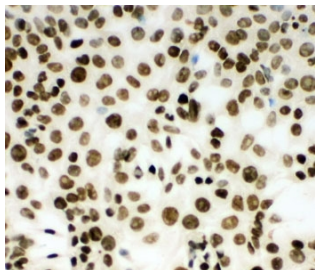
IHC-P: MCM2 antibody testing of rat intestinal lymphocyte tissue



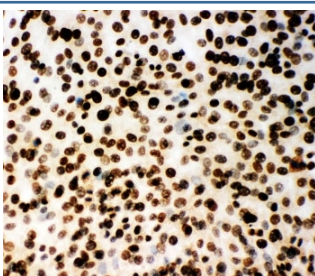
IHC-P: MCM2 antibody testing of mouse intestine tissue



Western blot testing of MCM2 antibody and Lane 1: rat testis; 2: (r) kidney; 3: mouse intestine; 4: (m) testis; 5: (m) ovary; 6: (m) kidney



ICC testing of (m) HEPA cells



ICC testing of (m) NIH3T3 cells

Description

MCM2 is a human nuclear protein that plays an important role in onset of DNA replication and cell division. It is similar to members of the family of early S-phase proteins. The hexameric protein complex formed by MCM proteins is a key component of the pre-replication complex (pre-RC) and may be involved in the formation of replication forks and in the recruitment of other DNA replication related proteins.

Application Notes

Titration of the MCM2 antibody may be required due to differences in protocols and secondary/substrate sensitivity.

Immunogen

Amino acids 884-904 (DLFKFNKFSRDLKRKLILQQF-mouse) were used as the immunogen for this MCM2 antibody.

Storage

The lyophilized MCM2 antibody can be stored at 4oC to -20oC. After reconstitution, aliquot and store at -20oC. Avoid repeated freezing and thawing.

