

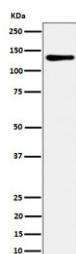
MCM2 Antibody / Minichromosome maintenance protein 2 [clone 28M60] (RQ8432)

Catalog No.	Formulation	Size
RQ8432	Antibody in PBS with 0.02% sodium azide, 50% glycerol and 0.4-0.5mg/ml BSA	100 ul

Recombinant **RABBIT MONOCLONAL**

[Bulk quote request](#)

Availability	1-3 business days
Species Reactivity	Human
Format	Purified
Host	Rabbit
Clonality	Recombinant Rabbit Monoclonal
Isotype	Rabbit IgG
Clone Name	28M60
Purity	Affinity chromatography
UniProt	P49736
Applications	Western Blot : 1:500-1:2000
Limitations	This MCM2 antibody is available for research use only.



Western blot testing of human HeLa cell lysate with MCM2 antibody. Commonly observed at 100-130 kDa.

Description

Acts as a component of the MCM2-7 complex (MCM complex) which is the replicative helicase essential for 'once per cell cycle' DNA replication initiation and elongation in eukaryotic cells. [UniProt]

Application Notes

Optimal dilution of the MCM2 antibody should be determined by the researcher.

Immunogen

A synthetic peptide derived from human MCM2 protein was used as the immunogen for the MCM2 antibody.

Storage

Store the MCM2 antibody at -20oC.