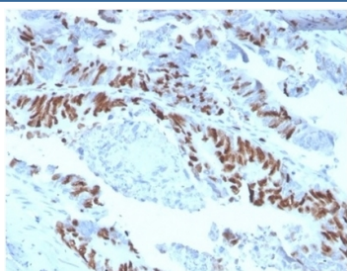


MCM2 Antibody [clone MCM2/3678] (V9409)

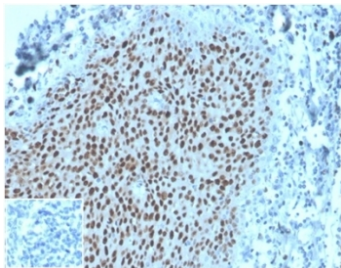
Catalog No.	Formulation	Size
V9409-100UG	0.2 mg/ml in 1X PBS with 0.1 mg/ml BSA (US sourced), 0.05% sodium azide	100 ug
V9409-20UG	0.2 mg/ml in 1X PBS with 0.1 mg/ml BSA (US sourced), 0.05% sodium azide	20 ug
V9409SAF-100UG	1 mg/ml in 1X PBS; BSA free, sodium azide free	100 ug

[Bulk quote request](#)

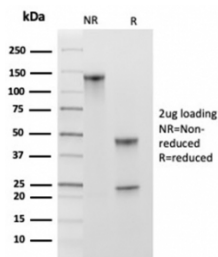
Availability	1-3 business days
Species Reactivity	Human
Format	Purified
Host	Mouse
Clonality	Monoclonal (mouse origin)
Isotype	Mouse IgG1, kappa
Clone Name	MCM2/3678
Purity	Protein A/G affinity
UniProt	P49736
Localization	Nuclear
Applications	Immunohistochemistry (FFPE) : 1-2ug/ml
Limitations	This MCM2 antibody is available for research use only.



IHC staining of FFPE human colon carcinoma tissue with MCM2 antibody (clone MCM2/3678). HIER: boil tissue sections in pH 9 10mM Tris with 1mM EDTA for 20 min and allow to cool before testing.



IHC staining of FFPE human tonsil tissue with MCM2 antibody (clone MCM2/3678).
Negative control inset: PBS instead of primary antibody to control for secondary binding.
HIER: boil tissue sections in pH 9 10mM Tris with 1mM EDTA for 20 min and allow to cool before testing.



SDS-PAGE analysis of purified, BSA-free MCM2 antibody (clone MCM2/3678) as confirmation of integrity and purity.

Description

MCM2 is a component of the MCM2-7 complex (MCM complex) which is the putative replicative helicase essential for 'once per cell cycle' DNA replication initiation and elongation in eukaryotic cells. [UniProt]

Application Notes

Optimal dilution of the MCM2 antibody should be determined by the researcher.

Immunogen

A portion of amino acids 650-750 was used as the immunogen for the MCM2 antibody.

Storage

Aliquot the MCM2 antibody and store frozen at -20oC or colder. Avoid repeated freeze-thaw cycles.