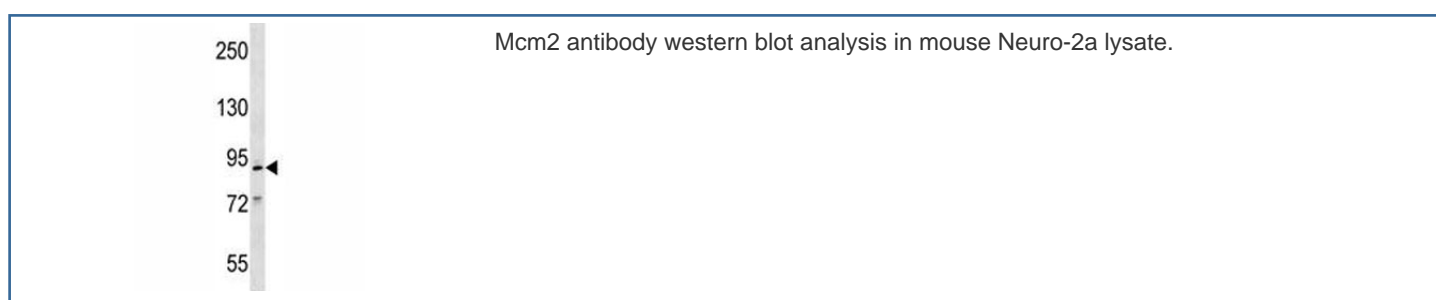


## Mcm2 Antibody (F47163)

Catalog No.	Formulation	Size
F47163-0.4ML	In 1X PBS, pH 7.4, with 0.09% sodium azide	0.4 ml
F47163-0.08ML	In 1X PBS, pH 7.4, with 0.09% sodium azide	0.08 ml

[Bulk quote request](#)

<b>Availability</b>	1-3 business days
<b>Species Reactivity</b>	Mouse
<b>Format</b>	Antigen affinity purified
<b>Clonality</b>	Polyclonal (rabbit origin)
<b>Isotype</b>	Rabbit Ig
<b>Purity</b>	Antigen affinity
<b>UniProt</b>	P97310
<b>Applications</b>	Western Blot : 1:1000
<b>Limitations</b>	This Mcm2 antibody is available for research use only.



## Description

Mcm2 acts as a factor that allows the DNA to undergo a single round of replication per cell cycle. Required for the entry in S phase and for cell division.

## Application Notes

Titration of the Mcm2 antibody may be required due to differences in protocols and secondary/substrate sensitivity.

## Immunogen

A portion of amino acids 713-742 from the mouse protein was used as the immunogen for this Mcm2 antibody.

## Storage

Aliquot the Mcm2 antibody and store frozen at -20oC or colder. Avoid repeated freeze-thaw cycles.