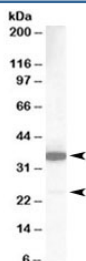


MCL1 Antibody (R33136)

Catalog No.	Formulation	Size
R33136-100UG	0.5 mg/ml in 1X TBS, pH7.3, with 0.5% BSA (US sourced) and 0.02% sodium azide	100 ug

[Bulk quote request](#)

Availability	1-3 business days
Species Reactivity	Human, Mouse, Rat
Predicted Reactivity	Cow, Dog, Mouse, Pig, Rat
Format	Antigen affinity purified
Host	Goat
Clonality	Polyclonal (goat origin)
Isotype	Goat Ig
Purity	Antigen affinity
Gene ID	4170
Applications	Western Blot : 1-3ug/ml ELISA (peptide) LOD : 1:2000
Limitations	This MCL1 antibody is available for research use only.



Western blot testing of human lung lysate with MCL1 antibody at 1ug/ml. Predicted molecular weight: 37/22 kDa (isoforms 1/3).

Description

Additional name(s) for this target protein: Myeloid cell leukemia sequence 1

Application Notes

Optimal dilution of the MCL1 antibody should be determined by the researcher.

Immunogen

Amino acids AGVGAGLAYLIR were used as the immunogen for this MCL1 antibody.

Storage

Aliquot and store the MCL1 antibody at -20oC.