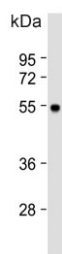


## MCH Receptor 1 Antibody / MCHR1 (F54553)

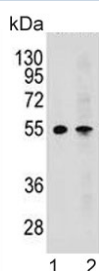
Catalog No.	Formulation	Size
F54553-0.4ML	In 1X PBS, pH 7.4, with 0.09% sodium azide	0.4 ml
F54553-0.08ML	In 1X PBS, pH 7.4, with 0.09% sodium azide	0.08 ml

[Bulk quote request](#)

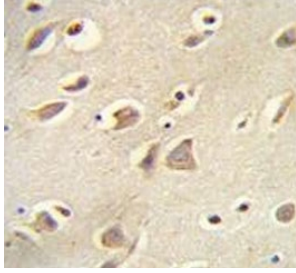
<b>Availability</b>	1-3 business days
<b>Species Reactivity</b>	Human
<b>Format</b>	Purified
<b>Host</b>	Rabbit
<b>Clonality</b>	Polyclonal (rabbit origin)
<b>Isotype</b>	Rabbit Ig
<b>Purity</b>	Antigen affinity purified
<b>UniProt</b>	Q99705
<b>Applications</b>	Western Blot : 1:500-1:2000 Flow Cytometry : 1:25 (1x10 <sup>6</sup> cells) Immunohistochemistry (FFPE) : 1:25
<b>Limitations</b>	This MCH Receptor 1 antibody is available for research use only.



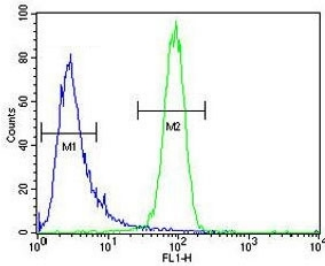
Western blot testing of human HL60 cell lysate with MCH Receptor 1 antibody. Expected molecular weight: 46-55 kDa.



Western blot testing of human 1) CEM and 2) K562 cell lysate with MCH Receptor 1 antibody. Expected molecular weight: 46-55 kDa.



IHC testing of FFPE human brain tissue with MCH Receptor 1 antibody. HIER: steam section in pH6 citrate buffer for 20 min and allow to cool prior to staining.



Flow cytometry testing of human K562 cells with MCH Receptor 1 antibody; Blue=isotype control, Green= MCH Receptor 1 antibody.

## Description

The protein encoded by this gene, a member of the G protein-coupled receptor family 1, is an integral plasma membrane protein which binds melanin-concentrating hormone. The encoded protein can inhibit cAMP accumulation and stimulate intracellular calcium flux, and is probably involved in the neuronal regulation of food consumption. Although structurally similar to somatostatin receptors, this protein does not seem to bind somatostatin.

## Application Notes

The stated application concentrations are suggested starting points. Titration of the MCH Receptor 1 antibody may be required due to differences in protocols and secondary/substrate sensitivity.

## Immunogen

A portion of amino acids 396-422 from the human protein was used as the immunogen for the MCH Receptor 1 antibody.

## Storage

Aliquot the MCH Receptor 1 antibody and store frozen at -20oC or colder. Avoid repeated freeze-thaw cycles.