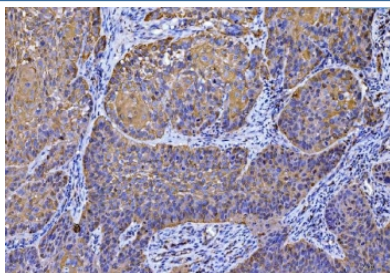


MCART1/2 Antibody / SLC25A51/52 (RQ6906)

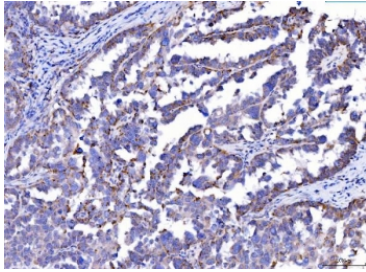
Catalog No.	Formulation	Size
RQ6906	0.5mg/ml if reconstituted with 0.2ml sterile DI water	100 ug

Bulk quote request

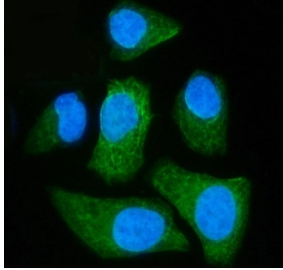
Availability	1-3 business days
Species Reactivity	Human, Mouse
Format	Antigen affinity purified
Clonality	Polyclonal (rabbit origin)
Isotype	Rabbit IgG
Purity	Antigen affinity purified
Buffer	Lyophilized from 1X PBS with 2% Trehalose
UniProt	Q9H1U9, Q3SY17
Localization	Cytoplasmic (mitochondria)
Applications	Western Blot : 1-2ug/ml Immunohistochemistry (FFPE) : 2-5ug/ml Immunofluorescence (FFPE) : 5ug/ml Flow Cytometry : 1-3ug/million cells Direct ELISA : 0.1-0.5ug/ml
Limitations	This MCART1/2 antibody is available for research use only.



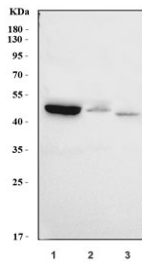
IHC staining of FFPE human laryngeal squamous cell carcinoma tissue with MCART1/2 antibody. HIER: boil tissue sections in pH8 EDTA for 20 min and allow to cool before testing.



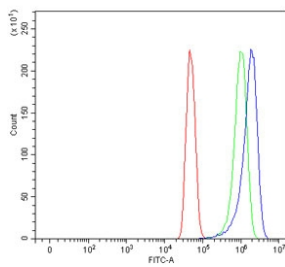
IHC staining of FFPE human serous adenocarcinoma of ovary tissue with MCART1/2 antibody. HIER: boil tissue sections in pH8 EDTA for 20 min and allow to cool before testing.



Immunofluorescent staining of FFPE human HeLa cells with MCART1/2 antibody (green) and DAPI nuclear stain (blue). HIER: steam section in pH6 citrate buffer for 20 min.



Western blot testing of 1) human HeLa, 2) monkey COS-7 and 3) mouse NIH 3T3 cell lysate with MCART1/2 antibody. Predicted molecular weight ~34 kDa.



Flow cytometry testing of human U-251 cells with MCART1/2 antibody at 1ug/million cells (blocked with goat sera); Red=cells alone, Green=isotype control, Blue=MCART1/2 antibody.

Description

SLC25A51 gene ontology annotations related to this gene include transmembrane transporter activity.

Application Notes

Optimal dilution of the MCART1/2 antibody should be determined by the researcher.

Immunogen

Recombinant human protein (amino acids M1-E291) was used as the immunogen for the MCART1/2 antibody.

Storage

After reconstitution, the MCART1/2 antibody can be stored for up to one month at 4oC. For long-term, aliquot and store at -20oC. Avoid repeated freezing and thawing.

