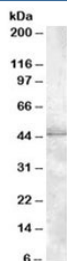


## MBNL1 Antibody (R35829)

Catalog No.	Formulation	Size
R35829-100UG	0.5 mg/ml in 1X TBS, pH7.3, with 0.5% BSA (US sourced) and 0.02% sodium azide	100 ug

[Bulk quote request](#)

Availability	1-3 business days
Species Reactivity	Human
Predicted Reactivity	Cow, Dog, Mouse, Rat
Format	Antigen affinity purified
Host	Goat
Clonality	Polyclonal (goat origin)
Isotype	Goat Ig
Purity	Antigen affinity
Gene ID	4154
Applications	Western Blot : 1-3ug/ml ELISA (peptide) LOD : 1:4000
Limitations	This MBNL1 antibody is available for research use only.



Western blot testing of HeLa lysate with MBNL1 antibody at 1ug/ml. Predicted molecular weight: ~42kDa.

### Description

Additional name(s) for this target protein: Muscleblind-like 1

### Application Notes

Optimal dilution of the MBNL1 antibody should be determined by the researcher.

## Immunogen

Amino acids SAEHLTSHKYVTQ were used as the immunogen for this MBNL1 antibody.

## Storage

Aliquot and store the MBNL1 antibody at -20oC.