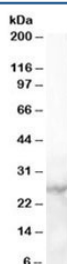


MBL2 Antibody / Mannose-Binding Lectin 2 (R36087)

Catalog No.	Formulation	Size
R36087-100UG	0.5 mg/ml in 1X TBS, pH7.3, with 0.5% BSA (US sourced) and 0.02% sodium azide	100 ug

[Bulk quote request](#)

Availability	1-3 business days
Species Reactivity	Human
Format	Antigen affinity purified
Clonality	Polyclonal (goat origin)
Isotype	Goat Ig
Purity	Antigen affinity
Gene ID	4153
Localization	Secreted
Applications	Western Blot : 1-3ug/ml ELISA (peptide) LOD : 1:4000
Limitations	This MBL2 antibody is available for research use only.



Western blot testing of human heart lysate with MBL2 antibody at 1ug/ml. Predicted molecular weight: ~26 kDa.

Description

Additional name(s) for this target protein: Mannose-binding lectin 2, Mannan-Binding Lectin

Application Notes

Optimal dilution of the MBL2 antibody should be determined by the researcher.

Immunogen

Amino acids STSHLAVCEFPI were used as the immunogen for this MBL2 antibody.

Storage

Aliquot and store the MBL2 antibody at -20oC.