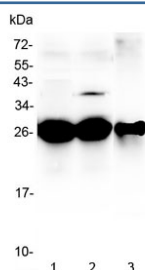


MBL2 Antibody / Mannose-Binding Lectin 2 (R32879)

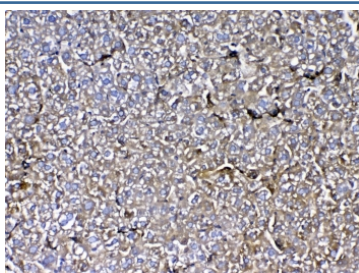
Catalog No.	Formulation	Size
R32879	0.5mg/ml if reconstituted with 0.2ml sterile DI water	100 ug

Bulk quote request

Availability	1-3 business days
Species Reactivity	Mouse, Rat
Format	Antigen affinity purified
Clonality	Polyclonal (rabbit origin)
Isotype	Rabbit IgG
Purity	Antigen affinity
Buffer	Lyophilized from 1X PBS with 2.5% BSA, 0.025% sodium azide
UniProt	P08661
Localization	Secreted
Applications	Western Blot : 0.5-1ug/ml IHC (FFPE) : 1-2ug/ml Direct ELISA (recombinant Rat Protein) : 0.1-0.5ug/ml (BSA-free format available)
Limitations	This MBL2 antibody is available for research use only.



Western blot testing of 1) rat liver, 2) mouse liver and 3) mouse HEPA1-6 lysate with MBL2 antibody at 0.5ug/ml. Predicted molecular weight ~26 kDa.



IHC testing of FFPE rat liver tissue with MBL2 antibody at 1ug/ml. Required HIER: steam section in pH6 citrate buffer for 20 min and allow to cool prior to testing.

Description

MBL2, also called mannan-binding lectin (protein C) 2, soluble or Mannose-binding lectin (MBL) is a lectin that is instrumental in innate immunity. MBL2 is mapped to chromosome 10q11.2-q21. It belongs to the class of collectins in the C-type lectin superfamily, whose function appears to be pattern recognition in the first line of defense in the pre-immune host. MBL2 recognizes carbohydrate patterns, found on the surface of a large number of pathogenic micro-organisms, including bacteria, viruses, protozoa and fungi. Binding MBL2 to a micro-organism results in activation of the lectin pathway of the complement system. Another important function of MBL2 is that this molecule binds senescent and apoptotic cells and enhances engulfment of whole, intact apoptotic cells, as well as cell debris by phagocytes.

Application Notes

Optimal dilution of the MBL2 antibody should be determined by the researcher.

Immunogen

A recombinant rat protein corresponding to amino acids E19-D244 was used as the immunogen for the MBL2 antibody.

Storage

After reconstitution, the MBL2 antibody can be stored for up to one month at 4°C. For long-term, aliquot and store at -20°C. Avoid repeated freezing and thawing.