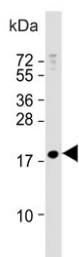


## MBD3L3 Antibody (F54637)

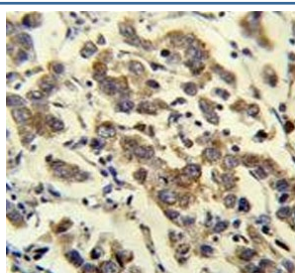
Catalog No.	Formulation	Size
F54637-0.4ML	In 1X PBS, pH 7.4, with 0.09% sodium azide	0.4 ml
F54637-0.08ML	In 1X PBS, pH 7.4, with 0.09% sodium azide	0.08 ml

[Bulk quote request](#)

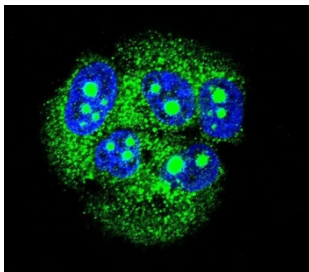
<b>Availability</b>	1-3 business days
<b>Species Reactivity</b>	Human
<b>Format</b>	Purified
<b>Clonality</b>	Polyclonal (rabbit origin)
<b>Isotype</b>	Rabbit Ig
<b>Purity</b>	Antigen affinity purified
<b>UniProt</b>	A6NE82
<b>Applications</b>	Flow Cytometry : 1:25 (1x10e6 cells) Immunofluorescence : 1:25 Immunohistochemistry (FFPE) : 1:25 Western Blot : 1:500-1:2000
<b>Limitations</b>	This MBD3L3 antibody is available for research use only.



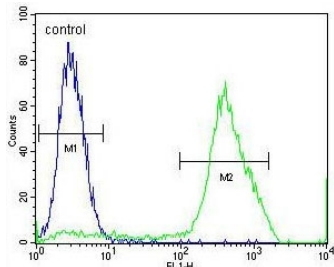
Western blot testing of human MCF7 cell lysate with MBD3L3 antibody. Predicted molecular weight ~23 kDa.



IHC testing of FFPE human testis carcinoma tissue with MBD3L3 antibody. HIER: steam section in pH6 citrate buffer for 20 min and allow to cool prior to staining.



Immunofluorescent staining of human MCF7 cells with MBD3L3 antibody (green) and DAPI nuclear stain (blue).



Flow cytometry testing of human MCF7 cells with MBD3L3 antibody; Blue=isotype control, Green= MBD3L3 antibody.

## Description

The MBD3L proteins are encoded by strongly repeated regions of the 19p13 chromosome. The exact number of functional copies is unclear, and some of them may represent pseudogenes. [UniProt]

## Application Notes

The stated application concentrations are suggested starting points. Titration of the MBD3L3 antibody may be required due to differences in protocols and secondary/substrate sensitivity.

## Immunogen

A portion of amino acids 156-184 from the human protein was used as the immunogen for the MBD3L3 antibody.

## Storage

Aliquot the MBD3L3 antibody and store frozen at -20oC or colder. Avoid repeated freeze-thaw cycles.