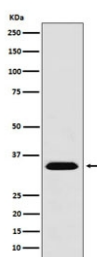


MBD3 Antibody [clone AFEE-13] (RQ4821)

Catalog No.	Formulation	Size
RQ4821	Antibody in PBS with 0.02% sodium azide, 50% glycerol and 0.4-0.5mg/ml BSA	100 ul

[Bulk quote request](#)

Availability	1-2 weeks
Species Reactivity	Human
Format	Purified
Clonality	Rabbit Monoclonal
Isotype	Rabbit IgG
Clone Name	AFEE-13
Purity	Affinity purified
UniProt	O95983
Applications	Western Blot : 1:500-1:2000
Limitations	This MBD3 antibody is available for research use only.



Western blot testing of human 293T cell lysate with MBD3 antibody. Predicted molecular weight ~33 kDa.

Description

DNA methylation is the major modification of eukaryotic genomes and plays an essential role in mammalian development. The MBD3 gene belongs to a family of nuclear proteins which are characterized by the presence of a methyl-CpG binding domain (MBD). The encoded protein is a subunit of the NuRD, a multisubunit complex containing nucleosome remodeling and histone deacetylase activities. Unlike the other family members, the encoded protein is not capable of binding to methylated DNA. The protein mediates the association of metastasis-associated protein 2 with the core histone deacetylase complex. [RefSeq]

Application Notes

Optimal dilution of the MBD3 antibody should be determined by the researcher.

Immunogen

A synthetic peptide specific to human MBD3 was used as the immunogen for the MBD3 antibody.

Storage

Store the MBD3 antibody at -20oC.