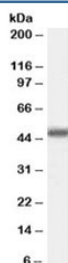


MBD2 Antibody / Methyl-CpG-binding domain protein 2 (R35686)

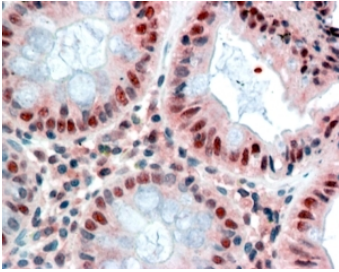
Catalog No.	Formulation	Size
R35686-100UG	0.5 mg/ml in 1X TBS, pH7.3, with 0.5% BSA (US sourced) and 0.02% sodium azide	100 ug

[Bulk quote request](#)

Availability	1-3 business days
Species Reactivity	Human
Predicted Reactivity	Dog, Mouse, Rat
Format	Antigen affinity purified
Host	Goat
Clonality	Polyclonal (goat origin)
Isotype	Goat Ig
Purity	Antigen affinity
Gene ID	8932
Applications	Western Blot : 0.3-1ug/ml Immunohistochemistry (FFPE) : 2-4ug/ml ELISA (peptide) LOD : 1:64000
Limitations	This MBD2 antibody is available for research use only.



Western blot testing of Jurkat cell lysate with MBD2 antibody at 0.3ug/ml.
Predicted/observed molecular weight: ~47kDa.



IHC staining of FFPE human colon with MBD2 antibody at 2.5ug/ml. HIER: steamed with pH6 citrate buffer, AP-staining.

Description

Additional name(s) for this target protein: Methyl-CpG binding domain protein 2

Application Notes

Optimal dilution of the MBD2 antibody should be determined by the researcher.

1. This MBD2 antibody is specific for isoform 1.

Immunogen

Amino acids RNDPLNQNKGPDLN were used as the immunogen for this MBD2 antibody.

Storage

Aliquot and store the MBD2 antibody at -20oC.