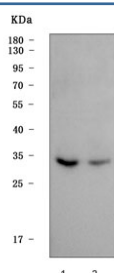


Max-like protein X Antibody / MLX (RQ7330)

Catalog No.	Formulation	Size
RQ7330	0.5mg/ml if reconstituted with 0.2ml sterile DI water	100 ug

Bulk quote request

Availability	1-3 business days
Species Reactivity	Human
Format	Antigen affinity purified
Host	Rabbit
Clonality	Polyclonal (rabbit origin)
Isotype	Rabbit IgG
Purity	Antigen affinity purified
Buffer	Lyophilized from 1X PBS with 2% Trehalose
UniProt	Q9UH92
Applications	Western Blot : 0.5-1ug/ml Direct ELISA : 0.1-0.5ug/ml
Limitations	This Max-like protein X antibody is available for research use only.



Western blot testing of human 1) HepG2 and 2) 293T cell lysate with Max-like protein X antibody. Predicted molecular weight ~33 kDa, commonly observed at 30-50 kDa.

Description

Max-like protein X is a protein that in humans is encoded by the MLX gene. The product of this gene belongs to the family of basic helix-loop-helix leucine zipper (bHLH-Zip) transcription factors. These factors form heterodimers with Mad proteins and play a role in proliferation, determination and differentiation. This gene product may act to diversify Mad family function by its restricted association with a subset of the Mad family of transcriptional repressors, namely, Mad1 and Mad4. Alternatively spliced transcript variants encoding different isoforms have been identified for this gene.

Application Notes

Optimal dilution of the Max-like protein X antibody should be determined by the researcher.

Immunogen

Recombinant human protein (amino acids R33-Y298) was used as the immunogen for the Max-like protein X antibody.

Storage

After reconstitution, the Max-like protein X antibody can be stored for up to one month at 4°C. For long-term, aliquot and store at -20°C. Avoid repeated freezing and thawing.