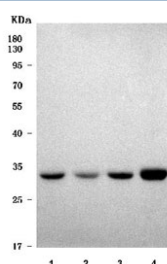


MATE-1 Antibody / Multidrug and toxin extrusion protein 1 / SLC47A1 (RQ7698)

Catalog No.	Formulation	Size
RQ7698	0.5mg/ml if reconstituted with 0.2ml sterile DI water	100 ug

Bulk quote request

Availability	1-3 business days
Species Reactivity	Human, Mouse, Rat
Format	Antigen affinity purified
Clonality	Polyclonal (rabbit origin)
Isotype	Rabbit IgG
Purity	Antigen affinity purified
Buffer	Lyophilized from 1X PBS with 2% Trehalose
UniProt	Q96FL8
Applications	Western Blot : 0.5-1ug/ml Direct ELISA : 0.1-0.5ug/ml
Limitations	This MATE-1 antibody is available for research use only.



Western blot testing of 1) rat liver, 2) rat heart, 3) mouse liver and 4) mouse heart tissue lysate with MATE-1 antibody. Predicted molecular weight ~62 kDa, 32 kDa and 64 kDa (multiple isoforms).

Description

Multidrug and toxin extrusion protein 1 (MATE1), also known as solute carrier family 47 member 1, is a protein that in humans is encoded by the SLC47A1 gene. This gene is located within the Smith-Magenis syndrome region on chromosome 17. It encodes a protein of unknown function.

Application Notes

Optimal dilution of the MATE-1 antibody should be determined by the researcher.

Immunogen

E. coli-derived recombinant human protein (amino acids M1-D508) was used as the immunogen for the MATE-1 antibody.

Storage

After reconstitution, the MATE-1 antibody can be stored for up to one month at 4oC. For long-term, aliquot and store at -20oC. Avoid repeated freezing and thawing.