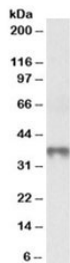


## MAT2B Antibody / MAT II beta / TGR (R35589)

Catalog No.	Formulation	Size
R35589-100UG	0.5 mg/ml in 1X TBS, pH7.3, with 0.5% BSA (US sourced) and 0.02% sodium azide	100 ug

[Bulk quote request](#)

<b>Availability</b>	1-3 business days
<b>Species Reactivity</b>	Human
<b>Predicted Reactivity</b>	Mouse, Rat, Dog, Pig, Cow
<b>Format</b>	Antigen affinity purified
<b>Host</b>	Goat
<b>Clonality</b>	Polyclonal (goat origin)
<b>Isotype</b>	Goat Ig
<b>Purity</b>	Antigen affinity
<b>Gene ID</b>	27430
<b>Applications</b>	Western Blot : 0.3-1ug/ml ELISA (peptide) LOD : 1:128000
<b>Limitations</b>	This MAT2B antibody is available for research use only.



Western blot testing of human thymus lysate with MAT2B antibody at 0.3ug/ml.  
Predicted molecular weight: ~37kDa.

### Description

Additional name(s) for this target protein: Methionine adenosyltransferase II, beta

### Application Notes

Optimal dilution of the MAT2B antibody should be determined by the researcher.

1. This MAT2B antibody is specific for isoform 1.

## **Immunogen**

Amino acids REKELSIHFVPGS were used as the immunogen for this MAT2B antibody.

## **Storage**

Aliquot and store the MAT2B antibody at -20oC.