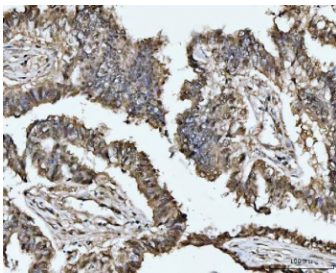


## MAT2A Antibody / Methionine adenosyltransferase 2 (RQ7352)

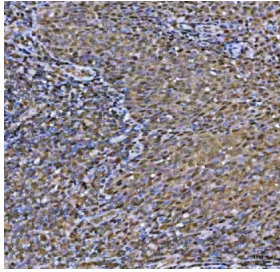
Catalog No.	Formulation	Size
RQ7352	0.5mg/ml if reconstituted with 0.2ml sterile DI water	100 ug

### Bulk quote request

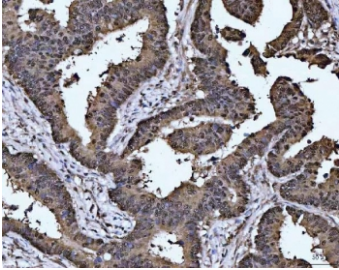
<b>Availability</b>	1-3 business days
<b>Species Reactivity</b>	Human, Mouse, Rat
<b>Format</b>	Antigen affinity purified
<b>Host</b>	Rabbit
<b>Clonality</b>	Polyclonal (rabbit origin)
<b>Isotype</b>	Rabbit IgG
<b>Purity</b>	Antigen affinity purified
<b>Buffer</b>	Lyophilized from 1X PBS with 2% Trehalose
<b>UniProt</b>	P31153
<b>Localization</b>	Cytoplasmic
<b>Applications</b>	Western Blot : 0.5-1ug/ml Immunohistochemistry (FFPE) : 2-5ug/ml Flow Cytometry : 1-3ug/million cells Direct ELISA : 0.1-0.5ug/ml
<b>Limitations</b>	This MAT2A antibody is available for research use only.



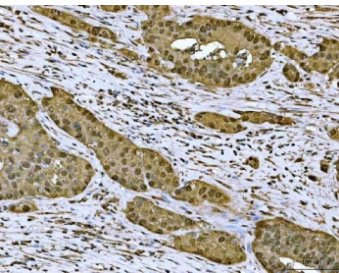
IHC staining of FFPE human lung adenocarcinoma tissue with MAT2A antibody. HIER: boil tissue sections in pH8 EDTA for 20 min and allow to cool before testing.



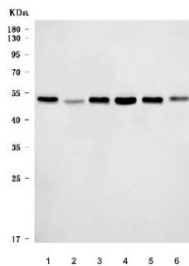
IHC staining of FFPE human tonsil tissue with MAT2A antibody. HIER: boil tissue sections in pH8 EDTA for 20 min and allow to cool before testing.



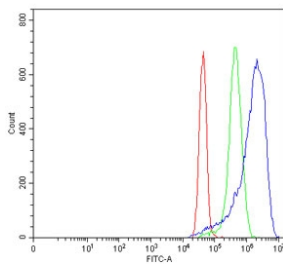
IHC staining of FFPE human rectal cancer tissue with MAT2A antibody. HIER: boil tissue sections in pH8 EDTA for 20 min and allow to cool before testing.



IHC staining of FFPE human appendiceal adenocarcinoma tissue with MAT2A antibody. HIER: boil tissue sections in pH8 EDTA for 20 min and allow to cool before testing.



Western blot testing of 1) human HeLa, 2) human HepG2, 3) human U937, 4) human Daudi, 5) rat kidney and 6) mouse kidney tissue lysate with MAT2A antibody. Predicted molecular weight ~44 kDa.



Flow cytometry testing of human MCF7 cells with MAT2A antibody at 1ug/million cells (blocked with goat sera); Red=cells alone, Green=isotype control, Blue= MAT2A antibody.

## Description

The S-adenosylmethionine synthase isoform type-2 protein catalyzes the production of S-adenosylmethionine (AdoMet) from methionine and ATP. AdoMet is the key methyl donor in cellular processes.

## Application Notes

Optimal dilution of the MAT2A antibody should be determined by the researcher.

## Immunogen

Recombinant human protein (amino acids M1-A229) was used as the immunogen for the MAT2A antibody.

## **Storage**

After reconstitution, the MAT2A antibody can be stored for up to one month at 4°C. For long-term, aliquot and store at -20°C. Avoid repeated freezing and thawing.