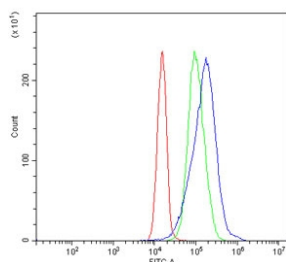


MAT II beta Antibody / MAT2B / TGR (RQ6661)

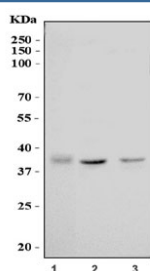
Catalog No.	Formulation	Size
RQ6661	0.5mg/ml if reconstituted with 0.2ml sterile DI water	100 ug

Bulk quote request

Availability	1-3 business days
Species Reactivity	Human
Format	Antigen affinity purified
Clonality	Polyclonal (rabbit origin)
Isotype	Rabbit IgG
Purity	Antigen affinity purified
Buffer	Lyophilized from 1X PBS with 2% Trehalose
UniProt	Q9NZL9
Applications	Western Blot : 1-2ug/ml Flow Cytometry : 1-3ug/million cells Direct ELISA : 0.1-0.5ug/ml
Limitations	This MAT II beta antibody is available for research use only.



Flow cytometry testing of human JK-1 cells with MAT II beta antibody at 1ug/million cells (blocked with goat sera); Red=cells alone, Green=isotype control, Blue= MAT II beta antibody.



Western blot testing of human 1) HepG2, 2) HEK293 and 3) Jurkat cell lysate with MAT II beta antibody. Predicted molecular weight: ~37 kDa.

Description

The protein encoded by this gene belongs to the methionine adenosyltransferase (MAT) family. MAT catalyzes the biosynthesis of S-adenosylmethionine from methionine and ATP. This protein is the regulatory beta subunit of MAT. Alternative splicing results in multiple transcript variants encoding different isoforms.

Application Notes

Optimal dilution of the MAT II beta antibody should be determined by the researcher.

Immunogen

Recombinant human protein (amino acids Q50-H334) was used as the immunogen for the MAT II beta antibody.

Storage

After reconstitution, the MAT II beta antibody can be stored for up to one month at 4°C. For long-term, aliquot and store at -20°C. Avoid repeated freezing and thawing.