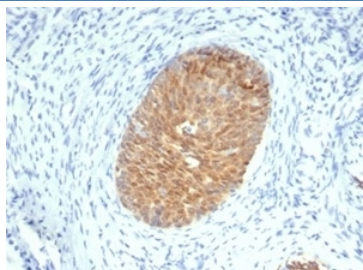


MASPIN Antibody / SERPINB5 [clone SERPINB5/4975] (V9708)

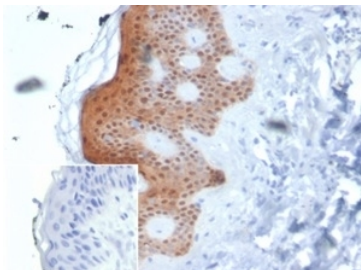
Catalog No.	Formulation	Size
V9708-100UG	0.2 mg/ml in 1X PBS with 0.1 mg/ml BSA (US sourced), 0.05% sodium azide	100 ug
V9708-20UG	0.2 mg/ml in 1X PBS with 0.1 mg/ml BSA (US sourced), 0.05% sodium azide	20 ug
V9708SAF-100UG	1 mg/ml in 1X PBS; BSA free, sodium azide free	100 ug

[Bulk quote request](#)

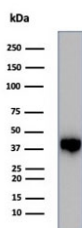
Availability	1-3 business days
Species Reactivity	Human
Format	Purified
Host	Mouse
Clonality	Monoclonal (mouse origin)
Isotype	Mouse IgG1, kappa
Clone Name	SERPINB5/4975
Purity	Protein A/G affinity
UniProt	P36952
Localization	Secreted, Extracellular space
Applications	Western Blot : 1-2ug/ml Immunohistochemistry (FFPE) : 1-2ug/ml
Limitations	This MASPIN antibody is available for research use only.



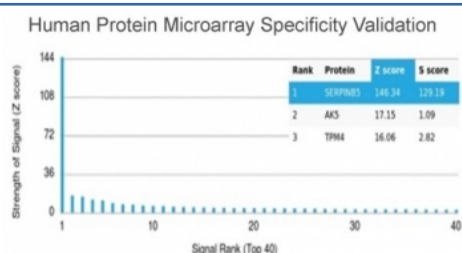
IHC staining of FFPE human cervical squamous cell carcinoma with MASPIN Antibody (clone SERPINB5/4975). HIER: boil tissue sections in pH 9 10mM Tris with 1mM EDTA for 20 min and allow to cool before testing.



IHC staining of FFPE human skin tissue with MASPIN antibody (clone SERPINB5/4975). Negative control inset: PBS instead of primary antibody to control for secondary binding. HIER: boil tissue sections in pH 9 10mM Tris with 1mM EDTA for 20 min and allow to cool before testing.



Western blot testing of human PC3 cell lysate using MASPIN antibody (clone SERPINB5/4975). Predicted molecular weight: 42~45 kDa.



Analysis of HuProt(TM) microarray containing more than 19,000 full-length human proteins using MASPIN antibody (clone SERPINB5/4975). These results demonstrate the foremost specificity of the SERPINB5/4975 mAb. Z- and S- score: The Z-score represents the strength of a signal that an antibody (in combination with a fluorescently-tagged anti-IgG secondary Ab) produces when binding to a particular protein on the HuProt(TM) array. Z-scores are described in units of standard deviations (SD's) above the mean value of all signals generated on that array. If the targets on the HuProt(TM) are arranged in descending order of the Z-score, the S-score is the difference (also in units of SD's) between the Z-scores. The S-score therefore represents the relative target specificity of an Ab to its intended target.

Description

MASPIN/SERPINB5 is structurally a serine protease inhibitor (serpin) that was initially isolated from normal human mammary epithelial cells. Serpins are a family of proteins that inhibit Chymotrypsin-like serine proteinases.

Application Notes

Optimal dilution of the MASPIN antibody should be determined by the researcher.

Immunogen

A portion of amino acids 1-200 was used as the immunogen for the MASPIN antibody.

Storage

Aliquot the MASPIN antibody and store frozen at -20°C or colder. Avoid repeated freeze-thaw cycles.

