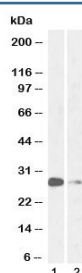


MASH1 Antibody / ASCL1 (R36479)

Catalog No.	Formulation	Size
R36479-100UG	0.5 mg/ml in 1X TBS, pH7.3, with 0.5% BSA (US sourced) and 0.02% sodium azide	100 ug

[Bulk quote request](#)

Availability	1-3 business days
Species Reactivity	Human, Mouse, Rat, Dog, Cow
Format	Antigen affinity purified
Host	Goat
Clonality	Polyclonal (goat origin)
Isotype	Goat Ig
Purity	Antigen affinity
UniProt	P50553
Applications	Western Blot : 0.5-2ug/ml ELISA (peptide) LOD : 1:32000
Limitations	This MASH1 antibody is available for research use only.



Western blot testing of 1) mouse lung and 2) rat lung lysate with MASH1 antibody at 1ug/ml. Predicted molecular weight ~25 kDa.

Description

Mammalian achaete scute homolog 1 / Achaete scute homolog 1 plays a role in the neuronal commitment and differentiation and in the generation of olfactory and autonomic neurons. It is highly expressed in medullary thyroid cancer and small cell lung cancer and may be a useful marker for these cancers. The presence of a CAG repeat in the gene suggests that it may also play a role in tumor formation. [Wiki]

Application Notes

Optimal dilution of the MASH1 antibody should be determined by the researcher.

Immunogen

Amino acids HKSAPKQVKRQRS were used as the immunogen for this MASH1 antibody.

Storage

Aliquot and store the MASH1 antibody at -20oC.