

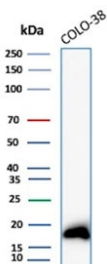
MART-1 Antibody / Melan-A [clone rMLANA/8180] (V5283)

Catalog No.	Formulation	Size
V5283-100UG	0.2 mg/ml in 1X PBS with 0.1 mg/ml BSA (US sourced), 0.05% sodium azide	100 ug
V5283-20UG	0.2 mg/ml in 1X PBS with 0.1 mg/ml BSA (US sourced), 0.05% sodium azide	20 ug
V5283SAF-100UG	1 mg/ml in 1X PBS; BSA free, sodium azide free	100 ug

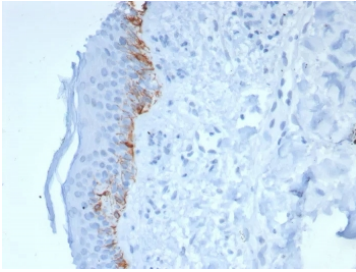
Recombinant **MOUSE MONOCLONAL**

[Bulk quote request](#)

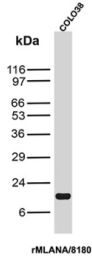
Availability	1-3 business days
Species Reactivity	Human
Format	Purified
Host	Mouse
Clonality	Recombinant Mouse Monoclonal
Isotype	Mouse IgG1, kappa
Clone Name	rMLANA/8180
Purity	Protein A/G affinity
UniProt	Q16655
Localization	Cytoplasm
Applications	Immunohistochemistry (FFPE) : 1-2ug/ml for 30 min at RT Western Blot : 2-4ug/ml
Limitations	This MART-1 antibody is available for research use only.



Western blot testing of human COLO-38 cell lysate with MART-1 antibody. Expected molecular weight ~20 kDa with possible doublet.



IHC staining of FFPE human skin tissue with MART-1 antibody (clone rMLANA/8180).
HIER: boil tissue sections in pH 9 10mM Tris with 1mM EDTA for 20 min and allow to cool before testing.



MART-1 Antibody COLO-38 WB. Western blot analysis of human COLO-38 cell lysate using MART-1 antibody clone rMLANA/8180. A distinct band is detected near approximately 18-20 kDa, consistent with the expected molecular weight range of Melanoma antigen recognized by T-cells 1 / MLANA/MART-1, a melanocyte lineage-associated protein involved in melanosome biology and melanoma-associated differentiation pathways. A closely migrating doublet may reflect alternative processing or post-translationally modified MART-1-associated species commonly observed for melanocytic lineage proteins.

Description

This antibody recognizes a protein doublet of 20-22kDa, identified as MART-1 (Melanoma Antigen Recognized by T cells 1) or Melan-A. MART-1 is a newly identified melanocyte differentiation antigen recognized by autologous cytotoxic T lymphocytes. Seven other melanoma associated antigens recognized by autologous cytotoxic T cells include MAGE-1, MAGE-3, tyrosinase, gp100, gp75, BAGE-1, and GAGE-1. Subcellular fractionation shows that MART-1 is present in melanosomes and endoplasmic reticulum. This mAb labels melanomas and other tumors showing melanocytic differentiation. It is also a useful positive-marker for angiomyolipomas. It does not stain tumor cells of epithelial, lymphoid, glial, or mesenchymal origin.

This antibody is part of the [Melan-A antibody collection](#), where additional MLANA/MART-1 antibodies for various applications can be explored.

Application Notes

Optimal dilution of the MART-1 antibody should be determined by the researcher.

Immunogen

Recombinant full-length human protein was used as the immunogen for the MART-1 antibody.

Storage

Aliquot the MART-1 antibody and store frozen at -20°C or colder. Avoid repeated freeze-thaw cycles.