

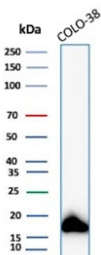
## MART-1 Antibody / Melan-A [clone MLANA/8108R] (V5288)

Catalog No.	Formulation	Size
V5288-100UG	0.2 mg/ml in 1X PBS with 0.1 mg/ml BSA (US sourced), 0.05% sodium azide	100 ug
V5288-20UG	0.2 mg/ml in 1X PBS with 0.1 mg/ml BSA (US sourced), 0.05% sodium azide	20 ug
V5288SAF-100UG	1 mg/ml in 1X PBS; BSA free, sodium azide free	100 ug

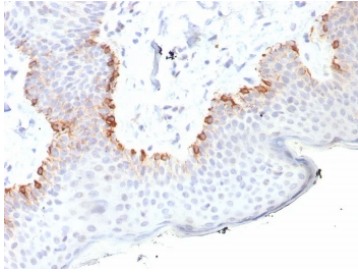
Recombinant **RABBIT MONOCLONAL**

[Bulk quote request](#)

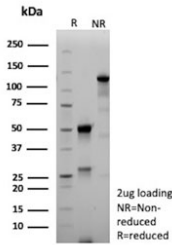
<b>Availability</b>	1-3 business days
<b>Species Reactivity</b>	Human
<b>Format</b>	Purified
<b>Host</b>	Rabbit
<b>Clonality</b>	Recombinant Rabbit Monoclonal
<b>Isotype</b>	Rabbit IgG, kappa
<b>Clone Name</b>	MLANA/8108R
<b>Purity</b>	Protein A/G affinity
<b>UniProt</b>	Q16655
<b>Localization</b>	Cytoplasm
<b>Applications</b>	Immunohistochemistry (FFPE) : 1-2ug/ml for 30 min at RT Western Blot : 2-4ug/ml
<b>Limitations</b>	This MART-1 antibody is available for research use only.



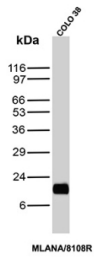
Western blot testing of human COLO-38 cell lysate with MART-1 antibody (clone MLANA/8108R). Expected molecular weight ~20 kDa with possible doublet.



IHC staining of FFPE human skin tissue with MART-1 antibody (clone MLANA/8108R).  
 HIER: boil tissue sections in pH 9 10mM Tris with 1mM EDTA for 20 min and allow to cool before testing.



SDS-PAGE analysis of purified, BSA-free MART-1 antibody (clone MLANA/8108R) as confirmation of integrity and purity.



MART-1 Antibody Human COLO-38 Cell WB. Western blot analysis of human COLO-38 cell lysate using MART-1 antibody clone MLANA/8108R. A strong band is detected near approximately 18-20 kDa, consistent with the expected molecular weight range of Melanoma antigen recognized by T-cells 1 / MLANA/MART-1, a melanocyte lineage-associated protein involved in melanosome formation and melanoma differentiation pathways. A closely migrating doublet may represent alternatively processed or post-translationally modified MART-1-associated protein species commonly observed in melanocytic tumor cell lines.

## Description

This antibody recognizes a protein doublet of 20-22kDa, identified as MART-1 (Melanoma Antigen Recognized by T cells 1) or Melan-A. MART-1 is a newly identified melanocyte differentiation antigen recognized by autologous cytotoxic T lymphocytes. Seven other melanoma associated antigens recognized by autologous cytotoxic T cells include MAGE-1, MAGE-3, tyrosinase, gp100, gp75, BAGE-1, and GAGE-1. Subcellular fractionation shows that MART-1 is present in melanosomes and endoplasmic reticulum. This mAb labels melanomas and other tumors showing melanocytic differentiation. It is also a useful positive-marker for angiomyolipomas. It does not stain tumor cells of epithelial, lymphoid, glial, or mesenchymal origin.

This antibody is part of the [Melan-A antibody collection](#), where additional MLANA/MART-1 antibodies for various applications can be explored.

## Application Notes

Optimal dilution of the MART-1 antibody should be determined by the researcher.

## Immunogen

A recombinant fragment corresponding to the N-terminus of human Melan A protein was used as the immunogen for the MART-1 antibody.

## Storage

Aliquot the MART-1 antibody and store frozen at -20°C or colder. Avoid repeated freeze-thaw cycles.

