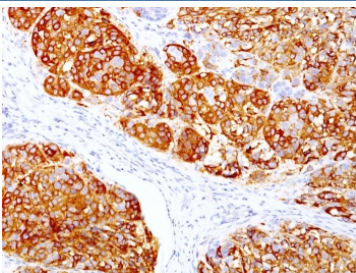


MART-1 Antibody Cocktail / Melan-A [clone DT101 + BC199] (V7772)

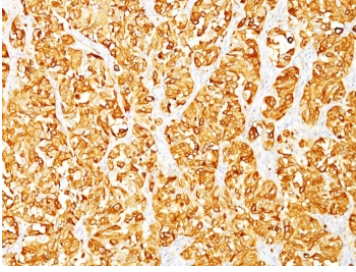
Catalog No.	Formulation	Size
V7772-100UG	0.2 mg/ml in 1X PBS with 0.1 mg/ml BSA (US sourced) and 0.05% sodium azide	100 ug
V7772-20UG	0.2 mg/ml in 1X PBS with 0.1 mg/ml BSA (US sourced) and 0.05% sodium azide	20 ug
V7772SAF-100UG	1 mg/ml in 1X PBS; BSA free, sodium azide free	100 ug

[Bulk quote request](#)

Availability	1-3 business days
Species Reactivity	Human
Format	Purified
Host	Mouse
Clonality	Monoclonal (mouse origin)
Isotype	Mouse IgG2b
Clone Name	DT101 + BC199
Purity	Protein G affinity chromatography
UniProt	Q16655
Localization	Cytoplasmic
Applications	Immunohistochemistry (FFPE) : 1-2ug/ml
Limitations	This MART-1 antibody cocktail is available for research use only.



IHC staining of FFPE human melanoma with MART-1 antibody cocktail (clones DT101 + BC199). HIER: boil tissue sections in pH 9 10mM Tris with 1mM EDTA for 10-20 min and allow to cool before testing.



IHC staining of FFPE human melanoma with MART-1 antibody cocktail (clones DT101 + BC199). HIER: boil tissue sections in pH 9 10mM Tris with 1mM EDTA for 10-20 min and allow to cool before testing.

Description

This antibody cocktail recognizes a protein doublet of 20-22kDa, identified as MART-1 (Melanoma Antigen Recognized by T cells 1) or Melan-A. MART-1 is a melanocyte differentiation antigen recognized by autologous cytotoxic T lymphocytes. Seven other melanoma associated antigens recognized by autologous cytotoxic T cells include MAGE-1, MAGE-3, tyrosinase, gp100, gp75, BAGE-1, and GAGE-1. Subcellular fractionation shows that MART-1 is present in melanosomes and endoplasmic reticulum. This MAb cocktail labels melanomas and other tumors showing melanocytic differentiation. It is also a useful positive-marker for angiomyolipomas. It does not stain tumor cells of epithelial, lymphoid, glial, or mesenchymal origin.

Explore our [Melan-A Antibody / Melanocyte Lineage Marker clone A103 page](#) for additional validation data and research applications involving melanoma biology, melanocytic tumor identification, and pigment cell differentiation pathways.

Application Notes

Optimal dilution of the MART-1 antibody cocktail should be determined by the researcher.

Immunogen

Recombinant human protein was used as the immunogen for the MART-1 antibody cocktail.

Storage

Store the MART-1 antibody cocktail at 2-8oC (with azide) or aliquot and store at -20oC or colder (without azide).