

MART-1 Antibody Cocktail [clone A103 + M2-7C10 + M2-9E3] (V2118)

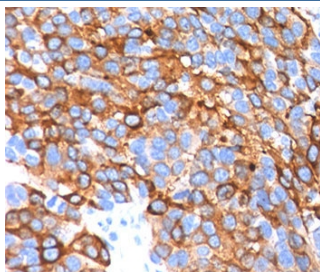
Catalog No.	Formulation	Size
V2118-100UG	0.2 mg/ml in 1X PBS with 0.1 mg/ml BSA (US sourced) and 0.05% sodium azide	100 ug
V2118-20UG	0.2 mg/ml in 1X PBS with 0.1 mg/ml BSA (US sourced) and 0.05% sodium azide	20 ug
V2118SAF-100UG	1 mg/ml in 1X PBS; BSA free, sodium azide free	100 ug
V2118IHC-7ML	Prediluted in 1X PBS with 0.1 mg/ml BSA (US sourced) and 0.05% sodium azide; *For IHC use only*	7 ml



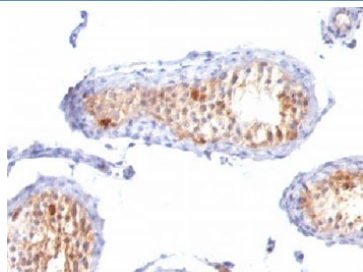
Citations (1)

[Bulk quote request](#)

Species Reactivity	Human, Mouse, Rat
Format	Purified
Host	Mouse
Clonality	Monoclonal (mouse origin)
Isotype	Mouse IgG1 (A103) + IgG2b (M2-7C10 & M2-9E3)
Clone Name	A103 + M2-7C10 + M2-9E3
Purity	Protein G affinity chromatography
Buffer	1X PBS, pH 7.4
Gene ID	2315
Localization	Cytoplasmic
Applications	Flow Cytometry : 1-2ug/10 ⁶ cells Immunofluorescence : 1-2ug/ml Western Blot : 1-2ug/ml Immunohistochemistry (FFPE) : 1-2ug/ml for 30 min at RT
Limitations	This MART-1 antibody cocktail is available for research use only.



IHC testing in human melanoma stained with MART-1 antibody cocktail.



IHC testing of FFPE testis tissue with MART-1 antibody cocktail.

Description

This antibody cocktail recognizes a protein doublet of 20-22kDa, identified as MART-1 (Melanoma Antigen Recognized by T cells 1) or Melan-A. MART-1 is a melanocyte differentiation antigen recognized by autologous cytotoxic T lymphocytes. There are seven other melanoma associated antigens recognized by autologous cytotoxic T cells: MAGE-1, MAGE-3, tyrosinase, gp100, gp75, BAGE-1, and GAGE-1. Subcellular fractionation shows that MART-1 is present in melanosomes and endoplasmic reticulum. This MART-1 antibody cocktail labels melanomas and other tumors showing melanocytic differentiation. It is also a useful positive-marker for angiomyolipomas. The antibody cocktail does not stain tumor cells of epithelial, lymphoid, glial, or mesenchymal origin.

Application Notes

The concentration stated for each application is a general starting point. Variations in protocols, secondaries and substrates may require the antibody to be titrated up or down for optimal performance.

1. Staining of formalin-fixed tissues is enhanced by boiling tissue sections in pH 9 10mM Tris with 1mM EDTA for 10-20 min followed by cooling at RT for 20 minutes.
2. The prediluted format is supplied in a dropper bottle and is optimized for use in IHC. After epitope retrieval step (if required), drip mAb solution onto the tissue section and incubate at RT for 30 min.

Immunogen

Recombinant human protein (A103; M2-7C10; M2-9E3) was used as the immunogen for this MART-1 antibody cocktail.

Storage

Store the MART-1 antibody cocktail at 2-8oC (with azide) or aliquot and store at -20oC or colder (without azide).

Alternate Names

Antigen LB39-AA, Antigen SK29-AA, Melanoma antigen recognized by T-cells 1, MLAN-A, MLANA, MART-1 antibody, Melan-A antibody

References (3)

