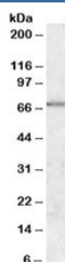


MARK2 Antibody (R35376)

Catalog No.	Formulation	Size
R35376-100UG	0.5 mg/ml in 1X TBS, pH7.3, with 0.5% BSA (US sourced) and 0.02% sodium azide	100 ug

[Bulk quote request](#)

Availability	1-3 business days
Species Reactivity	Human
Predicted Reactivity	Cow, Mouse, Rat
Format	Antigen affinity purified
Clonality	Polyclonal (goat origin)
Isotype	Goat Ig
Purity	Antigen affinity
Gene ID	2011
Applications	Western Blot : 0.3-1ug/ml ELISA (peptide) LOD : 1:16000
Limitations	This MARK2 antibody is available for research use only.



Western blot testing of human cerebellum lysate with MARK2 antibody at 0.3ug/ml.
Predicted molecular weight: ~81/81/79kDa (isoforms c/e/f), observed here at ~70kDa.

Description

Additional name(s) for this target protein: MAP/microtubule affinity-regulating kinase 2, PAR-1

Application Notes

Optimal dilution of the MARK2 antibody should be determined by the researcher.

1. This MARK2 antibody is specific for isoforms c/e/f.

Immunogen

Amino acids QNGKDSTAPQR were used as the immunogen for this MARK2 antibody. This sequence is common to isoforms c/e/f.

Storage

Aliquot and store the MARK2 antibody at -20oC.