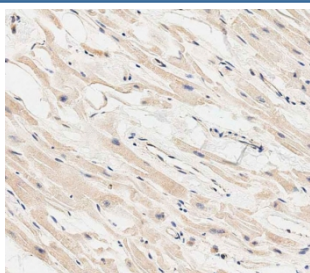


## MARCH5 Antibody / Membrane-associated RING finger protein 5 (F55086)

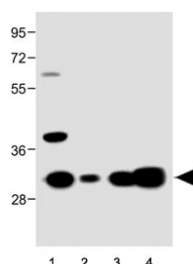
Catalog No.	Formulation	Size
F55086-0.4ML	In 1X PBS, pH 7.4, with 0.09% sodium azide	0.4 ml
F55086-0.08ML	In 1X PBS, pH 7.4, with 0.09% sodium azide	0.08 ml

[Bulk quote request](#)

<b>Availability</b>	1-2 business days
<b>Species Reactivity</b>	Human, Mouse
<b>Format</b>	Purified
<b>Clonality</b>	Polyclonal (rabbit origin)
<b>Isotype</b>	Rabbit Ig
<b>UniProt</b>	Q9NX47
<b>Localization</b>	Cytoplasm
<b>Applications</b>	Western Blot : 1:500-1:1000 Immunohistochemistry (FFPE) : 1:50-1:100
<b>Limitations</b>	This MARCH5 antibody is available for research use only.



IHC staining of FFPE human heart tissue with MARCH5 antibody. HIER: steam section in pH6 citrate buffer for 20 min and allow to cool prior to staining.



Western blot testing of 1) human U-251, 2) human T-47D, 3) human heart and 4) mouse kidney tissue lysate with MARCH5 antibody. Predicted molecular weight ~31 kDa.

## Description

Membrane-associated RING finger protein 5 (MARCH5), also known as MARCHF5, is involved in cellular processes that are essential for maintaining the homeostasis and integrity of the cell. It possesses a RING finger domain that allows it to function as an E3 ubiquitin ligase, mediating the ubiquitination and subsequent degradation of specific target proteins. One of the key functions of MARCH5 is its role in regulating the turnover of mitochondrial proteins. Studies have shown that MARCH5 targets a variety of mitochondrial proteins for ubiquitination, leading to their degradation by the proteasome. This process helps to maintain the quality control of mitochondria and ensures the proper functioning of these vital organelles. Furthermore, MARCH5 has been implicated in various cellular processes, including apoptosis, autophagy, and immune response. By targeting specific proteins for degradation, MARCH5 can regulate the signaling pathways that govern these processes, influencing cell survival, proliferation, and immunity. MARCH5 has also been linked to the development of certain diseases, such as Parkinson's disease and cancer. Dysregulation of MARCH5 expression or activity has been observed in these conditions.

## Application Notes

Titration of the MARCH5 antibody may be required due to differences in protocols and secondary/substrate sensitivity.

## Immunogen

A portion of amino acids 4-32 from the human protein was used as the immunogen for this MARCH5 antibody.

## Storage

Aliquot the MARCH5 antibody and store frozen at -20oC or colder. Avoid repeated freeze-thaw cycles.